



MEGADYNE



METAL DRIVE COMPONENTS

TECHNICAL
HANDBOOK

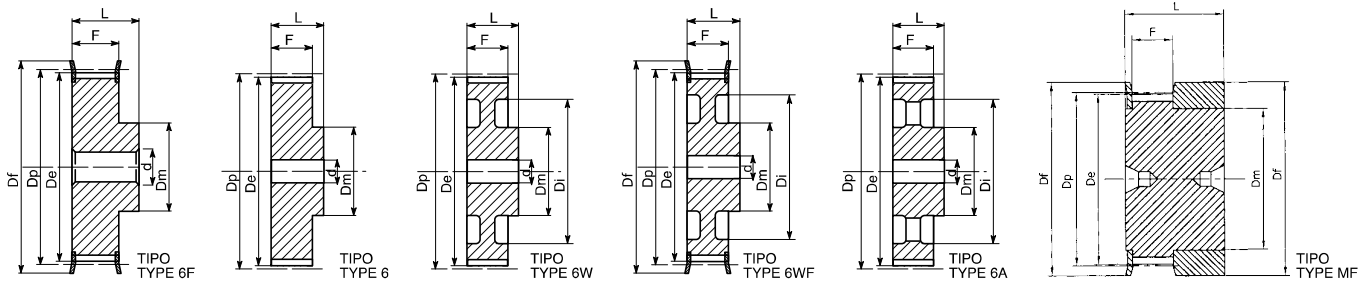
EN

PULEGGE PER CINGHIE DENTATE
TIMING BELT PULLEYS



PULEGGE PER CINGHIE DENTATE

TIMING BELT PULLEYS



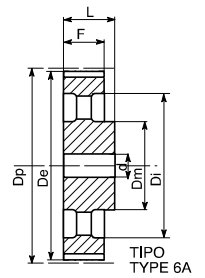
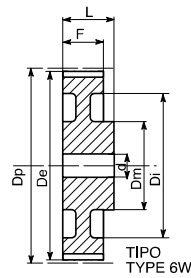
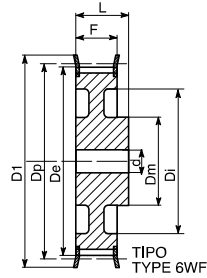
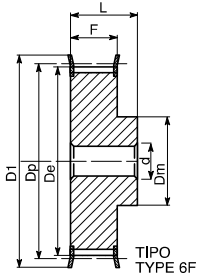
MXL 025 - 0,080" (2,032 mm)

Caratteristiche Features Merkmale Características	Descrizione Description Beschreibung Description Descripción	Tipo Type Typ Type Tipo	Codice flangia Flange code Bordscheiben Typ Code flasque Código brida	N. denti N. of teeth Zähnezahl N. bre de dents Cantidad de dientes	Dp	De	Df	Dm	Di	F	L	Foro stock Stock bore Vor bohrung Alesage en stock Agujero de stock	Peso Weight Gewicht Poids Peso Kg
Alluminio / Aluminium / Aluminio / Aluminium / Aluminium / Aluminio	16 MXL 025	MF	FL502	16	10,35	9,84	15,0	8	-	8,5	16	-	0,01
	18 MXL 025	MF	FL503	18	11,64	11,12	16,0	9,5	-	8,5	16	-	0,01
	20 MXL 025	MF	FL503	20	12,94	12,43	16,0	9,5	-	8,5	16	-	0,01
	22 MXL 025	6F	FL504	22	14,23	13,72	17,5	10	-	11,0	16	3	0,01
	24 MXL 025	6F	FL505	24	15,52	15,01	20,0	10	-	11,0	16	3	0,01
	28 MXL 025	6F	FL506	28	18,11	17,60	25,0	11	-	11,0	16	3	0,02
	30 MXL 025	6F	FL506	30	19,40	18,90	25,0	12	-	11,0	16	4	0,03
	32 MXL 025	6F	FL507	32	20,70	20,19	26,0	14	-	11,0	16	4	0,03
	36 MXL 025	6F	FL508	36	23,29	22,78	28,0	16	-	11,0	16	4	0,03
	40 MXL 025	6F	FL509	40	25,87	25,37	32,0	18	-	11,0	16	4	0,04
	42 MXL 025	6F	FL509	42	27,17	26,67	32,0	18	-	11,0	16	5	0,04
	44 MXL 025	6F	FL510	44	28,46	27,95	36,0	18	-	11,0	16	5	0,45
Alluminio / Aluminium / Aluminio / Aluminium / Aluminium / Aluminio	senza flangia / without flanges / ohne Bordscheiben / sans flasques / sin tapetas	6	-	48	31,05	30,54	-	20	-	11,0	16	5	0,05
	60 MXL 025	6	-	60	38,81	38,30	-	24	-	11,0	16	5	0,08
	72 MXL 025	6	-	72	46,57	46,06	-	25	-	11,0	16	6	0,11

XL 037 - 1/5" (5,08 mm)

Caratteristiche Features Merkmale Características	Descrizione Description Beschreibung Description Descripción	Tipo Type Typ Type Tipo	Codice flangia Flange code Bordscheiben Typ Code flasque Código brida	N. denti N. of teeth Zähnezahl N. bre de dents Cantidad de dientes	Dp	De	Df	Dm	Di	F	L	Foro stock Stock bore Vor bohrung Alesage en stock Agujero de stock	Peso Weight Gewicht Poids Peso Kg
Alluminio / Aluminium / Aluminio / Aluminium / Aluminium / Aluminio	10 XL 037	6F	FL001	10	16,17	15,66	23,0	9,5	-	14,3	20	-	0,02
	11 XL 037	6F	FL001	11	17,79	17,28	23,0	9,5	-	14,3	20	-	0,02
	12 XL 037	6F	FL002	12	19,40	18,90	25,0	10	-	14,3	20	-	0,03
	13 XL 037	6F	FL002	13	21,02	20,51	25,0	10	-	14,3	20	-	0,04
	14 XL 037	6F	FL004	14	22,64	22,13	28,0	15	-	14,3	20	-	0,05
	15 XL 037	6F	FL004	15	24,26	23,75	28,0	15	-	14,3	20	-	0,05
	16 XL 037	6F	FL005	16	25,87	25,36	32,0	16	-	14,3	20	-	0,06
	17 XL 037	6F	FL006	17	27,49	26,98	32,0	20	-	14,3	20	-	0,07
	18 XL 037	6F	FL007	18	29,11	28,60	35,0	20	-	14,3	20	-	0,08
	19 XL 037	6F	FL007	19	30,72	30,22	35,0	20	-	14,3	22	-	0,09
	20 XL 037	6F	FL009	20	32,34	31,83	38,0	24	-	14,3	22	-	0,11
	21 XL 037	6F	FL009	21	33,96	33,45	38,0	24	-	14,3	22	-	0,12
	22 XL 037	6F	FL010	22	35,57	35,07	41,0	25	-	14,3	22	-	0,13
	24 XL 037	6F	FL012	24	38,81	38,30	44,0	30	-	14,3	22	-	0,15
	26 XL 037	6F	FL011	26	42,04	41,53	48,0	30	-	14,3	22	8	0,19
	27 XL 037	6F	FL011	27	43,66	43,15	48,0	34	-	14,3	22	8	0,20
	28 XL 037	6F	FL016	28	45,28	44,77	51,0	34	-	14,3	22	8	0,22
	29 XL 037	6F	FL016	29	46,89	46,39	51,0	34	-	14,3	22	8	0,22
	30 XL 037	6F	FL018	30	48,51	48,00	54,0	38	-	14,3	22	8	0,11
	32 XL 037	6F	FL020	32	51,74	51,24	57,0	38	-	14,3	25	8	0,12
Altern. / Altern. / Altern. / Altern. / Altern. / Altern.	34 XL 037	6	-	34	54,98	54,47	-	45	-	14,3	25	8	0,12
	35 XL 037	6	-	35	56,60	56,09	-	45	-	14,3	25	8	0,13
	36 XL 037	6	-	36	58,21	57,70	-	45	-	14,3	25	8	0,14
	38 XL 037	6	-	38	61,45	60,94	-	45	-	14,3	25	8	0,16
	39 XL 037	6	-	39	63,06	62,56	-	45	-	14,3	25	8	0,17
	40 XL 037	6	-	40	64,68	64,17	-	45	-	14,3	25	8	0,17
	41 XL 037	6	-	41	66,30	65,79	-	45	-	14,3	25	8	0,18
	42 XL 037	6	-	42	67,91	67,41	-	45	-	14,3	25	8	0,18
	43 XL 037	6	-	43	69,53	69,02	-	45	-	14,3	25	8	0,19
	44 XL 037	6	-	44	71,15	70,64	-	45	-	14,3	25	8	0,19
	45 XL 037	6W	-	45	72,77	72,26	-	45	61	14,3	25	10	0,19
	46 XL 037	6W	-	46	74,38	73,87	-	45	61	14,3	25	10	0,19
Acciaio / Steel / Stahl / Acier / Acero	47 XL 037	6W	-	47	76,00	75,49	-	45	61	14,3	25	10	0,19
	48 XL 037	6W	-	48	77,62	77,11	-	45	61	14,3	25	10	0,19
	49 XL 037	6W	-	49	79,23	78,73	-	45	61	14,3	25	10	0,22
	52 XL 037	6W	-	52	84,08	83,58	-	45	67	14,3	25	10	0,22
	56 XL 037	6W	-	56	90,55	90,04	-	45	80	14,3	25	10	0,25
	57 XL 037	6W	-	57	92,17	91,66	-	45	80	14,3	25	10	0,25
	58 XL 037	6W	-	58	93,79	93,28	-	45	80	14,3	25	10	0,25
	59 XL 037	6W	-	59	95,40	94,90	-	45	80	14,3	25	10	0,25
	60 XL 037	6W	-	60	97,02	96,51	-	45	80	14,3	25	10	0,25
	68 XL 037	6W	-	68	109,96	109,45	-	45	100	14,3	25	10	0,30
	69 XL 037	6W	-	69	111,57	111,07	-	45	100	14,3	25	10	0,30
	70 XL 037	6W	-	70	113,19	112,68	-	45	100	14,3	25	10	0,30
71 XL 037	6W	-	71	114,81	114,30	-	45	100	14,3	25	10	0,30	
72 XL 037	6W	-	72	116,42	115,92	-	45	100	14,3	25	10	0,30	

PULEGGE PER CINGHIE DENTATE TIMING BELT PULLEYS



L 100 - 3/8" (9,525 mm)

Caratteristiche Features Merkmale Características	Descrizione Description Beschreibung Description	TIPO Type Typ Type	Codice flangia Flange code Bordscheiben Typ Code flasque Código brida	N. denti N. of teeth Zähnezahl N. bre de dents Cantidad de dientes	Dp	De	Df	Dm	Di	F	L	Foro stock Stock bore Vor bohrung Alesage en stock Agujero de stock	Peso Weight / Gewicht Poids / Peso Kg			
Acciaio / Steel / Stahl Acier / Acero	con flangia / with flanges mit Bordscheiben / avec flasques / con tapetas	10L100	6F	FL050	10	30,32	29,56	37,0	20	-	31,8	45	8	0,15		
		11L100	6F	FL050	11	33,35	32,59	37,0	22	-	31,8	45	8	0,20		
		12L100	6F	FL052	12	36,38	35,62	43,0	24	-	31,8	45	8	0,26		
		13L100	6F	FL083	13	39,41	38,65	44,0	28	-	31,8	45	8	0,30		
		14L100	6F	FL054	14	42,45	41,68	48,0	28	-	31,8	45	11	0,34		
		15L100	6F	FL055	15	45,48	44,72	51,0	34	-	31,8	45	11	0,45		
		16L100	6F	FL056	16	48,51	47,75	54,0	36	-	31,8	45	11	0,52		
		17L100	6F	FL057	17	51,54	50,78	57,0	36	-	31,8	45	11	0,53		
		18L100	6F	FL058	18	54,57	53,81	60,0	40	-	31,8	45	11	0,62		
		19L100	6F	FL059	19	57,61	56,84	64,0	40	-	31,8	45	11	0,68		
		20L100	6F	FL060	20	60,64	59,88	66,5	40	-	31,8	45	11	0,72		
		21L100	6F	FL061	21	63,67	62,91	70,0	45	-	31,8	45	11	0,77		
		22L100	6F	FL062	22	66,70	65,94	75,0	45	-	31,8	45	11	0,88		
		23L100	6F	FL063	23	69,73	68,97	79,0	55	-	31,8	45	11	1,12		
		24L100	6F	FL063	24	72,77	72,00	79,0	55	-	31,8	45	11	1,13		
		25L100	6F	FL064	25	75,80	75,04	82,5	58	-	31,8	45	11	1,18		
		26L100	6F	FL065	26	78,83	78,07	86,0	58	-	31,8	45	11	1,24		
		27L100	6F	FL065	27	81,86	81,10	86,0	58	-	31,8	45	11	1,35		
		28L100	6F	FL066	28	84,89	84,13	91,0	58	-	31,8	45	11	1,42		
		29L100	6F	FL067	29	87,93	87,16	94,0	58	-	31,8	45	11	1,50		
		30L100	6F	FL068	30	90,96	90,20	97,0	70	-	31,8	45	11	1,61		
		32L100	6F	FL070	32	97,02	96,26	102,0	70	-	31,8	45	11	1,84		
		33L100	6F	FL071	33	100,05	99,29	106,0	70	-	31,8	45	11	1,95		
		34L100	6F	FL072	34	103,08	102,32	112,0	70	-	31,8	45	11	2,10		
		35L100	6F	FL072	35	106,12	105,35	112,0	70	-	31,8	45	11	2,23		
		36L100	6F	FL074	36	109,15	108,39	115,0	70	-	31,8	45	11	2,32		
		40L100	6WF	FL078	40	121,28	120,51	128,0	70	100	31,8	45	11	2,80		
		41L100	6WF	FL080	41	124,31	123,55	135,0	70	103	31,8	45	11	2,95		
		42L100	6WF	FL080	42	127,34	126,58	135,0	70	106	31,8	45	11	3,10		
		44L100	6WF	FL081	44	133,40	132,62	142,0	70	112	31,8	45	11	3,36		
		45L100	6WF	FL081	45	136,44	135,67	142,0	70	115	31,8	45	11	3,45		
		47L100	6WF	FL085	47	142,50	141,74	150,0	70	121	31,8	45	11	3,65		
		48L100	6WF	FL085	48	145,53	144,77	150,0	70	124	31,8	45	11	3,88		
		Ghisa / Cast iron / Grauguss Fonte / Hierro fundido	senza flangia / without flanges ohne Bordscheiben / sans flasques sin tapetas	49L100	6W	-	49	148,56	147,80	-	70	127	31,8	45	14	2,40
				50L100	6W	-	50	151,60	150,83	-	70	130	31,8	45	14	2,50
				52L100	6W	-	52	157,66	156,90	-	70	136	31,8	45	14	2,70
				56L100	6W	-	56	169,79	169,02	-	70	149	31,8	45	14	2,91
				57L100	6W	-	57	172,82	172,06	-	70	152	31,8	45	14	3,10
				60L100	6W	-	60	181,91	181,15	-	75	160	31,8	50	14	3,55
				65L100	6A	-	65	197,07	196,31	-	75	176	31,8	50	14	4,00
				66L100	6A	-	66	200,11	199,34	-	75	179	31,8	50	14	4,15
				72L100	6A	-	72	218,30	217,53	-	75	197	31,8	45	14	5,00
				84L100	6A	-	84	254,68	253,92	-	75	233	31,8	50	14	6,30
				90L100	6A	-	90	272,87	272,11	-	75	252	31,8	50	14	7,50
				96L100	6A	-	96	291,06	290,30	-	75	269	31,8	50	14	8,20
		120L100	6A	-	120	363,83	363,07	-	75	342	31,8	50	14	11,50		

H 075 - 1/2" (12,75 mm)

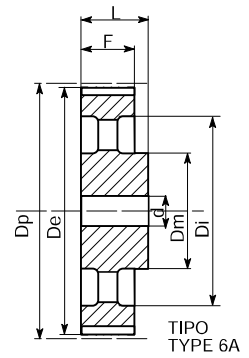
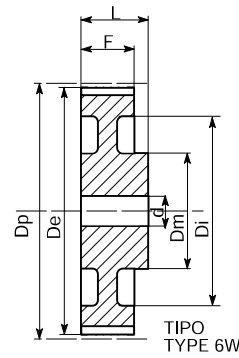
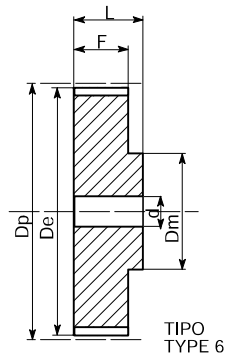
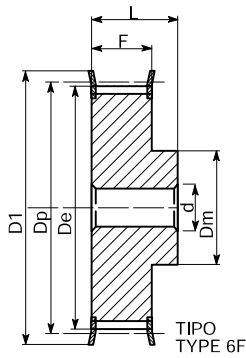
Caratteristiche Features Merkmale Características	Descrizione Description Beschreibung Description	TIPO Type Typ Type	Codice flangia Flange code Bordscheiben Typ Code flasque Código brida	N. denti N. of teeth Zähnezahl N. bre de dents Cantidad de dientes	Dp	De	Df	Dm	Di	F	L	Foro stock Stock bore Vor bohrung Alesage en stock Agujero de stock	Peso Weight / Gewicht Poids / Peso Kg			
Acciaio / Steel / Stahl Acier / Acero	con flangia / with flanges mit Bordscheiben / avec flasques / con tapetas	14H075	6F	FL059	14	56,60	55,22	64,0	40	-	26,4	40	8	0,59		
		15H075	6F	FL060	15	60,64	59,27	66,5	45	-	26,4	40	8	0,65		
		16H075	6F	FL061	16	64,68	63,31	70,0	45	-	26,4	40	8	0,70		
		17H075	6F	FL062	17	68,72	67,35	75,0	45	-	26,4	40	8	0,73		
		18H075	6F	FL063	18	72,77	71,39	79,0	55	-	26,4	40	11	0,91		
		19H075	6F	FL064	19	76,81	75,44	82,5	60	-	26,4	40	11	1,08		
		20H075	6F	FL076	20	80,85	79,48	87,0	62	-	26,4	40	11	1,18		
		21H075	6F	FL066	21	84,89	83,52	91,0	65	-	26,4	40	11	1,30		
		22H075	6F	FL067	22	88,94	87,56	94,0	68	-	26,4	40	11	1,42		
		23H075	6F	FL068	23	92,98	91,61	97,0	72	-	26,4	40	11	1,67		
		24H075	6F	FL070	24	97,02	95,65	102,0	72	-	26,4	40	11	1,71		
		25H075	6F	FL071	25	101,06	99,69	106,0	72	-	26,4	40	11	1,87		
		26H075	6F	FL072	26	105,11	103,73	112,0	80	-	26,4	40	11	2,00		
		27H075	6F	FL074	27	109,15	107,78	115,0	80	-	26,4	40	11	2,10		
		28H075	6F	FL075	28	113,19	111,82	120,0	80	-	26,4	40	11	2,26		
		29H075	6F	FL075	29	117,23	115,86	120,0	80	-	26,4	40	11	2,49		
		30H075	6F	FL078	30	121,28	119,90	128,0	80	-	26,4	40	11	2,70		
		32H075	6F	FL080	32	129,36	127,99	135,0	80	-	26,4	40	11	2,85		
		33H075	6F	FL081	33	133,40	132,03	142,0	80	-	26,4	40	11	3,10		
		34H075	6F	FL081	34	137,45	136,07	142,0	80	-	26,4	40	11	3,30		
		35H075	6F	FL085	35	141,49	140,12	150,0	80	-	26,4	40	11	3,50		
		36H075	6F	FL085	36	145,53	144,16	150,0	80	-	26,4	40	11	3,65		
		38H075	6F	FL086	38	153,62	152,24	158,0	80	-	26,4	40	11	3,90		
		40H075	6F	FL090	40	161,70	160,33	168,0	80	-	26,4	40	11	4,23		
		42H075	6F	FL094	42	169,79	168,41	180,0	80	-	26,4	40	11	4,30		
		Ghisa / Cast iron / Grauguss Fonte / Hierro fundido	senza flangia / without flanges / ohne Bordscheiben sans flasques / sin tapetas	44H075	6WF	FL095	44	177,87	176,50	184,0	80	150	26,4	40	14	5,20
				45H075	6WF	FL096	45	181,91	180,54	192,0	80	154	26,4	40	14	5,45
				48H075	6WF	FL100	48	194,04	192,67	200,0	90	166	26,4	45	14	4,30
				49H075	6W	-	49	198,08	196,71	-	90	170	26,4	45	14	4,50
		50H075	6W	-	50	202,13	200,75	-	90	174	26,4	45	14	4,66		

PULEGGE PER CINGHIE DENTATE TIMING BELT PULLEYS

H 100 - 1/2" (12,75 mm)

Caratteristiche Features Merkmale Características	Descrizione Description Beschreibung Description Descripción	Tipo Type Typ Type Tipo	Codice flangia Flange code Bordscheiben Typ Code flasque Código brida	N. denti N. of teeth Zähnezahl N. bre de dents Cantidad de dientes	Dp	De	Df	Dm	Di	F	L	Foro stock Stock bore Vor bohrung Alesage en stock Agujero de stock	Peso Weight / Gewicht Poids / Peso Kg			
Acciaio / Steel / Stahl Acier / Acero	con flangia / with flanges mit Bordscheiben / avec flasques / con tapetas	14H100	6F	FL059	14	56,60	55,22	64,0	40	-	31,8	45	11	0,67		
		15H100	6F	FL060	15	60,64	59,27	66,5	45	-	31,8	45	11	0,77		
		16H100	6F	FL061	16	64,68	63,31	70,0	45	-	31,8	45	11	0,88		
		17H100	6F	FL062	17	68,72	67,35	75,0	45	-	31,8	45	11	0,88		
		18H100	6F	FL063	18	72,77	71,39	79,0	55	-	31,8	45	14	1,06		
		19H100	6F	FL064	19	76,81	75,44	82,5	60	-	31,8	45	14	1,23		
		20H100	6F	FL076	20	80,85	79,48	87,0	62	-	31,8	45	14	1,33		
		21H100	6F	FL066	21	84,89	83,52	91,0	65	-	31,8	45	14	1,43		
		22H100	6F	FL067	22	88,94	87,56	94,0	68	-	31,8	45	14	1,63		
		23H100	6F	FL068	23	92,98	91,61	97,0	72	-	31,8	45	14	1,85		
		24H100	6F	FL070	24	97,02	95,65	102,0	72	-	31,8	45	14	1,93		
		25H100	6F	FL071	25	101,06	99,69	106,0	72	-	31,8	45	14	2,07		
		26H100	6F	FL072	26	105,11	103,73	112,0	80	-	31,8	45	14	2,30		
		27H100	6F	FL074	27	109,15	107,78	115,0	80	-	31,8	45	14	2,40		
		28H100	6F	FL075	28	113,19	111,82	120,0	80	-	31,8	45	14	2,53		
		29H100	6F	FL075	29	117,23	115,86	120,0	80	-	31,8	45	14	2,70		
		30H100	6F	FL078	30	121,28	119,90	128,0	80	-	31,8	45	14	2,93		
		32H100	6F	FL080	32	129,36	127,99	135,0	80	-	31,8	45	14	3,06		
		33H100	6F	FL081	33	133,40	132,03	142,0	80	-	31,8	45	14	3,40		
		34H100	6F	FL081	34	137,45	136,07	142,0	80	-	31,8	45	14	3,57		
		35H100	6F	FL085	35	141,49	140,12	150,0	80	-	31,8	45	14	3,80		
		36H100	6WF	FL085	36	145,53	144,16	150,0	80	118	31,8	45	14	3,92		
		38H100	6WF	FL086	38	153,62	152,24	158,0	80	123	31,8	45	14	4,40		
		40H100	6WF	FL090	40	161,70	160,33	168,0	80	134	31,8	45	14	4,95		
		42H100	6WF	FL094	42	169,79	168,41	180,0	80	140	31,8	45	14	5,60		
		Ghisa / Cast iron / Grauguss Fonte / Hierro fundido	senza flangia / without flanges ohne Bordscheiben / sans flasques / sin tapetas	44H100	6WF	FL095	44	177,87	176,50	184,0	80	150	31,8	50	14	6,20
				45H100	6WF	FL096	45	181,91	180,54	192,0	80	154	31,8	50	14	6,45
				48H100	6WF	FL100	48	194,04	192,67	200,0	90	166	31,8	50	14	5,30
				49H100	6W	-	49	198,08	196,71	-	90	170	31,8	50	19	5,40
				50H100	6W	-	50	202,13	200,75	-	90	174	31,8	50	19	5,50
				52H100	6W	-	52	210,21	208,84	-	90	182	31,8	50	19	5,80
				58H100	6A	-	58	234,47	233,09	-	90	207	31,8	50	19	6,20
				60H100	6A	-	60	242,55	241,18	-	90	215	31,8	50	19	7,50
				70H100	6A	-	70	282,98	281,61	-	100	255	31,8	55	19	8,20
72H100	6A			-	72	291,06	289,69	-	100	263	31,8	55	19	9,00		
82H100	6A			-	82	331,49	330,12	-	100	304	31,8	55	19	9,20		
84H100	6A			-	84	339,57	338,20	-	100	312	31,8	55	19	10,00		
94H100	6A			-	94	380,00	378,63	-	120	352	31,8	60	19	13,00		
96H100	6A			-	96	388,08	386,71	-	120	360	31,8	60	19	13,80		
106H100	6A			-	106	428,51	427,14	-	120	401	31,8	60	19	15,50		
116H100	6A			-	116	468,93	467,56	-	120	441	31,8	60	19	18,00		
118H100	6A			-	118	477,02	475,65	-	120	449	31,8	60	19	20,00		
120H100	6A			-	120	485,10	483,73	-	120	458	31,8	60	19	22,00		
150H100	6A	-	150	606,38	605,01	-	120	579	31,8	60	19	25,00				
152H100	6A	-	152	614,47	613,09	-	120	587	31,8	60	19	26,00				
154H100	6A	-	154	622,55	621,18	-	120	595	31,8	60	19	27,00				
156H100	6A	-	156	630,64	629,26	-	120	603	31,8	60	19	28,00				

PULEGGE PER CINGHIE DENTATE TIMING BELT PULLEYS



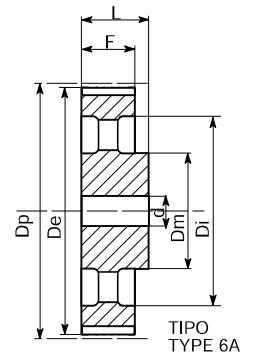
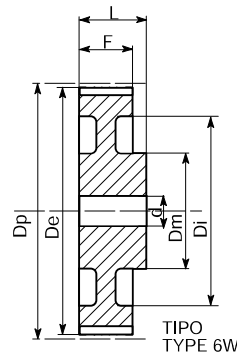
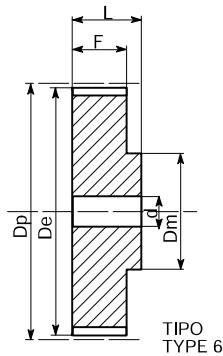
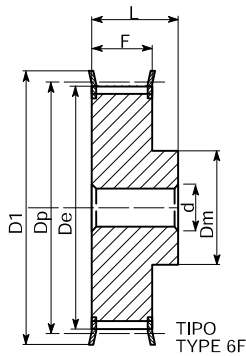
XXH 200 - 1" 1/4 (31,750 mm)

Caratteristiche Features Merkmale Características	Descrizione Description Beschreibung Description Descripción	Tipo Type Typ Type Tipo	Codice flangia Flange code Bordscheiben Typ Code flasque Código brida	N. denti N. of teeth Zähnezahl N. bre de dents Cantidad de dientes	Dp	De	Df	Dm	Di	F	L	Foro stock Stock bore Vor bohrung Alesaje en stock Agujero de stock	Peso Weight / Gewicht Poids / Peso Kg
Acciaio / Steel / Stahl Acier / Acero	con flangia / with flanges mit Bordscheiben avec flasques / con tapetas	6F	FL163	18	181,91	178,87	198,0	140	-	64,2	100	28	14,2
		6F	FL164	19	192,02	188,97	205,0	140	-	64,2	100	28	15,8
		6F	FL165	20	202,13	199,08	212,0	150	-	64,2	100	28	17,3
		6F	FL167	21	212,23	209,19	227,0	150	-	64,2	100	28	18,5
		6F	FL169	22	222,34	219,29	240,0	150	-	64,2	100	28	20,0
Ghisa / Cast iron / Grauguss Fonte / Hierro fundido	senza flangia / without flanges ohne Bordscheiben / sans flasques / sin tapetas	6	-	24	242,55	239,50	-	150	-	64,2	100	28	23,6
		6W	-	25	252,66	249,61	-	150	196	64,2	100	28	18,0
		6W	-	26	262,76	259,79	-	150	207	64,2	100	28	20,0
		6W	-	27	272,87	269,82	-	150	216	64,2	100	28	24,0
		6W	-	30	303,19	300,14	-	150	247	64,2	100	28	26,0
		6W	-	34	343,62	340,57	-	150	287	64,2	100	28	31,8
		6W	-	40	404,25	401,21	-	150	348	64,2	100	28	43,0
		6W	-	48	485,10	482,06	-	175	429	64,2	100	32	60,4
		6A	-	60	606,38	603,33	-	175	547	64,2	120	32	100,0
6A	-	72	727,66	724,61	-	175	668	64,2	120	38	130,0		
6A	-	90	909,57	906,52	-	175	850	64,2	120	38	156,0		

XXH 300 - 1" 1/4 (31,750 mm)

Caratteristiche Features Merkmale Características	Descrizione Description Beschreibung Description Descripción	Tipo Type Typ Type Tipo	Codice flangia Flange code Bordscheiben Typ Code flasque Código brida	N. denti N. of teeth Zähnezahl N. bre de dents Cantidad de dientes	Dp	De	Df	Dm	Di	F	L	Foro stock Stock bore Vor bohrung Alesaje en stock Agujero de stock	Peso Weight / Gewicht Poids / Peso Kg
Acciaio / Steel / Stahl Acier / Acero	con flangia / with flanges mit Bordscheiben avec flasques / con tapetas	6F	FL163	18	181,91	178,87	198,0	140	-	91,4	110	28	16,0
		6F	FL164	19	192,02	188,97	205,0	140	-	91,4	110	28	18,4
		6F	FL165	20	202,13	199,08	212,0	150	-	91,4	110	28	20,4
		6F	FL167	21	212,23	209,19	227,0	150	-	91,4	110	28	22,0
		6F	FL169	22	222,34	219,29	240,0	150	-	91,4	110	28	25,0
Ghisa / Cast iron / Grauguss Fonte / Hierro fundido	senza flangia / without flanges ohne Bordscheiben / sans flasques / sin tapetas	6	-	24	242,55	239,50	-	150	-	91,4	110	28	29,2
		6W	-	25	252,66	249,61	-	150	196	91,4	110	28	24,6
		6W	-	26	262,76	259,79	-	150	207	91,4	110	28	27,0
		6W	-	27	272,87	269,82	-	150	216	91,4	110	28	29,0
		6W	-	30	303,19	300,14	-	150	247	91,4	110	28	31,0
		6W	-	34	343,62	340,57	-	150	287	91,4	110	28	39,0
		6W	-	40	404,25	401,21	-	150	348	91,4	110	28	45,0
		6W	-	48	485,10	482,06	-	175	429	91,4	110	32	60,0
		6A	-	60	606,38	603,33	-	175	547	91,4	120	32	100,0
6A	-	72	727,66	724,61	-	175	668	91,4	120	38	135,0		
6A	-	90	909,57	906,52	-	175	850	91,4	120	38	160,0		

PULEGGE PER CINGHIE DENTATE TIMING BELT PULLEYS



XXH 400 - 1" 1/4 (31,750 mm)

Caratteristiche Features Merkmale Características Características	Descrizione Description Beschreibung Description Descripción	Tipo Type Typ Type Tipo	Codice flangia Flange code Bordscheiben Typ Code flasque Código brida	N. denti N. of teeth Zähnezahl N. bre de dents Cantidad de dientes	Dp	De	Df	Dm	Di	F	L	Foro stock Stock bore Vor bohrung Alesage en stock Agujero de stock	Peso Weight / Gewicht Poids / Peso Kg
Acciaio / Steel / Stahl Acier / Acero	con flangia / with flanges mit Bordscheiben avec flasques / con tapetas	6F	FL163	18	181,91	178,87	198,0	140	-	120,7	140	32	20,8
		6F	FL164	19	192,02	188,97	205,0	140	-	120,7	140	32	24,0
		6F	FL165	20	202,13	199,08	212,0	150	-	120,7	140	32	26,0
		6F	FL167	21	212,23	209,19	227,0	150	-	120,7	140	32	28,5
		6F	FL169	22	222,34	219,29	240,0	150	-	120,7	140	32	31,6
Ghisa / Cast iron / Grauguss Fonte / Hierro fundido	senza flangia / without flanges ohne Bordscheiben / sans flasques / sin tapetas	6	-	24	242,55	239,50	-	150	-	120,7	140	32	35,0
		6W	-	25	252,66	249,61	-	150	196	120,7	140	32	28,0
		6W	-	26	262,76	259,79	-	150	207	120,7	140	32	32,4
		6W	-	27	272,87	269,82	-	150	216	120,7	140	32	34,0
		6W	-	30	303,19	300,14	-	185	247	120,7	140	32	36,0
		6W	-	34	343,62	340,57	-	185	287	120,7	140	32	47,6
		6W	-	40	404,25	401,21	-	185	348	120,7	140	32	65,0
		6W	-	48	485,10	482,06	-	185	429	120,7	140	38	80,5
		6A	-	60	606,38	603,33	-	185	547	120,7	140	38	108,0
		6A	-	72	727,66	724,61	-	220	668	120,7	140	38	140,0
	6A	-	90	909,57	906,52	-	220	850	120,7	140	38	170,0	

XXH 500 - 1" 1/4 (31,750 mm)

Caratteristiche Features Merkmale Características Características	Descrizione Description Beschreibung Description Descripción	Tipo Type Typ Type Tipo	Codice flangia Flange code Bordscheiben Typ Code flasque Código brida	N. denti N. of teeth Zähnezahl N. bre de dents Cantidad de dientes	Dp	De	Df	Dm	Di	F	L	Foro stock Stock bore Vor bohrung Alesage en stock Agujero de stock	Peso Weight / Gewicht Poids / Peso Kg
Acciaio / Steel / Stahl Acier / Acero	con flangia / with flanges mit Bordscheiben avec flasques / con tapetas	6F	FL163	18	181,91	178,87	198,0	140	-	145,3	168	32	24,0
		6F	FL164	19	192,02	188,97	205,0	140	-	145,3	168	32	28,0
		6F	FL165	20	202,13	199,08	212,0	150	-	145,3	168	32	31,4
		6F	FL167	21	212,23	209,19	227,0	150	-	145,3	168	32	34,0
		6F	FL169	22	222,34	219,29	240,0	150	-	145,3	168	32	38,3
Ghisa / Cast iron / Grauguss Fonte / Hierro fundido	senza flangia / without flanges ohne Bordscheiben / sans flasques / sin tapetas	6	-	24	242,55	239,50	-	150	-	145,3	168	32	45,0
		6W	-	25	252,66	249,61	-	150	196	145,3	168	32	36,0
		6W	-	26	262,76	259,79	-	150	207	145,3	168	32	37,5
		6W	-	27	272,87	269,82	-	150	216	145,3	168	32	42,0
		6W	-	30	303,19	300,14	-	215	247	145,3	168	32	46,8
		6W	-	34	343,62	340,57	-	215	287	145,3	168	32	57,0
		6W	-	40	404,25	401,21	-	215	348	145,3	168	32	68,0
		6W	-	48	485,10	482,06	-	215	429	145,3	168	38	88,8
		6A	-	60	606,38	603,33	-	240	547	145,3	120	38	99,8
		6A	-	72	727,66	724,61	-	240	668	145,3	120	38	172,0
	6A	-	90	909,57	906,52	-	240	850	145,3	120	38	242,5	

BARRE DENTATE STANDARD STANDARD TOOTHED BARS

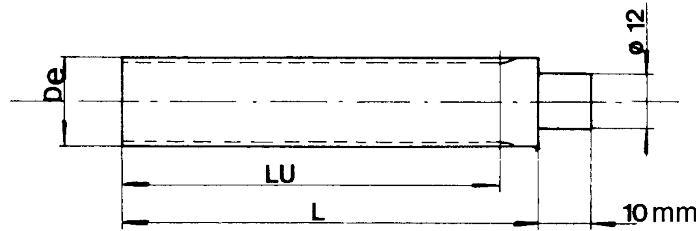
Le barre dentate XL e L sono costruite in acciaio C45E e in alluminio 6082 T6, adatte alla anodizzazione. Le barre MXL sono costruite solo in alluminio.

The timing bars XL and L are made of steel C45E and of aluminium 6082 T6, suitable for anodic treatment, whereas the bars MXL are made of aluminium only.

Die stangen XL und L sind aus stahl C45E und aluminium 6082 T6 geeignet fuer anodischen oxydation. Die stangen MXL werden nur aus aluminium gefertigt.

Les barreaux dentes XL et L sont fabriqués en acier C45E et en aluminium 6082 T6, apte au traitement anodi = que, tandis que les barreaux MXL ne sont fabriqués qu'en aluminium.

Las barras dentadas XL y L se construyen en acero C45E y en aluminio 6082 T6 para la oxidacion anodica, mientras que las barras MXL solo se fabrican en aluminio.



MXL - 0.080" (mm 2,032)

Descrizione Description Beschreibung Description Descripción	N. denti N. of teeth Zähnezahl N. bre de dents Cantidad de dientes	De	LU	L
MXL 11	11	6,60	50	75
MXL 12	12	7,26	50	75
MXL 13	13	7,90	50	75
MXL 14	14	8,56	50	75
MXL 15	15	9,19	50	75
MXL 16	16	9,83	50	75
MXL 17	17	10,49	50	75
MXL 18	18	11,12	50	75
MXL 19	19	11,78	90	120
MXL 20	20	12,42	90	120
MXL 21	21	13,08	90	120
MXL 22	22	13,72	125	140
MXL 23	23	14,38	125	140
MXL 24	24	15,01	125	140
MXL 25	25	15,67	125	140
MXL 26	26	16,31	125	140
MXL 27	27	16,94	125	140
MXL 28	28	16,70	125	140
MXL 29	29	18,24	125	140
MXL 30	30	18,90	125	140
MXL 32	32	20,19	125	140
MXL 34	34	21,49	125	140
MXL 35	35	22,12	132	140
MXL 36	36	22,78	132	140
MXL 38	38	24,08	132	140
MXL 40	40	25,37	132	140
MXL 42	42	26,67	140	140
MXL 44	44	27,94	140	140
MXL 45	45	28,60	140	140
MXL 48	48	30,53	140	140
MXL 50	50	31,83	140	140
MXL 60	60	38,30	160	160
MXL 64	64	40,89	160	160
MXL 65	65	41,53	160	160
MXL 70	70	44,78	160	160
MXL 72	72	46,05	160	160
MXL 75	75	48,01	160	160
MXL 90	90	57,71	160	160
MXL 110	110	70,64	160	160

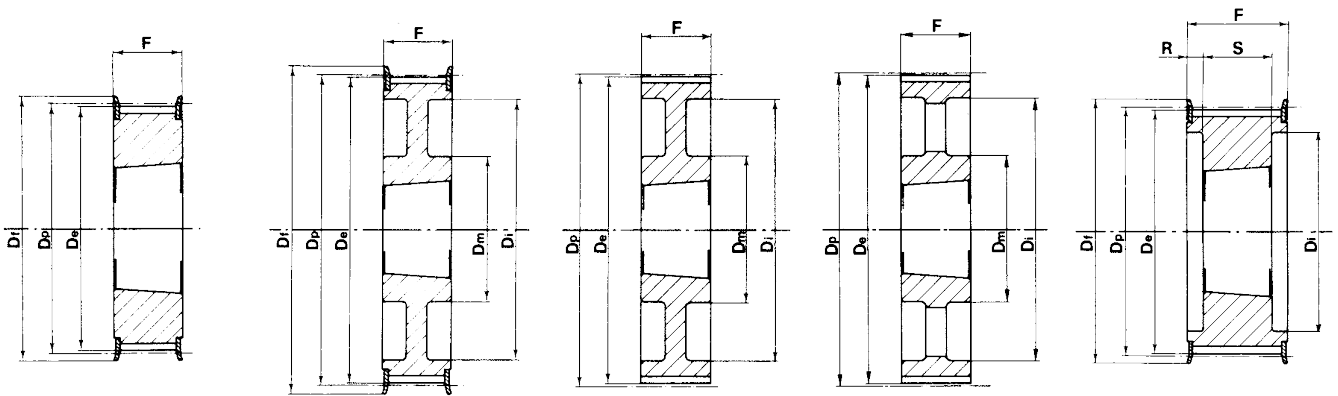
L - 3/8" (mm 9,525)

Descrizione Description Beschreibung Description Descripción	N. denti N. of teeth Zähnezahl N. bre de dents Cantidad de dientes	De	LU	L
L 10	10	29,56	140	140
L 11	11	32,59	140	140
L 12	12	35,62	160	160
L 13	13	38,65	160	160
L 14	14	41,68	160	160
L 15	15	44,72	160	160
L 16	16	47,75	160	160
L 17	17	50,78	160	160
L 18	18	53,81	160	160
L 19	19	56,84	160	160
L 20	20	59,88	160	160
L 21	21	62,91	160	160
L 22	22	65,94	160	160
L 23	23	68,97	160	160
L 24	24	72,00	160	160
L 27	27	81,10	160	160
L 30	30	90,20	160	160

**PULEGGE DENTATE PER BUSSOLA CONICA
TIMING BELT PULLEYS FOR TAPER BUSHES**



PULEGGE DENTATE PER BUSSOLA CONICA TIMING BELT PULLEYS FOR TAPER BUSHES



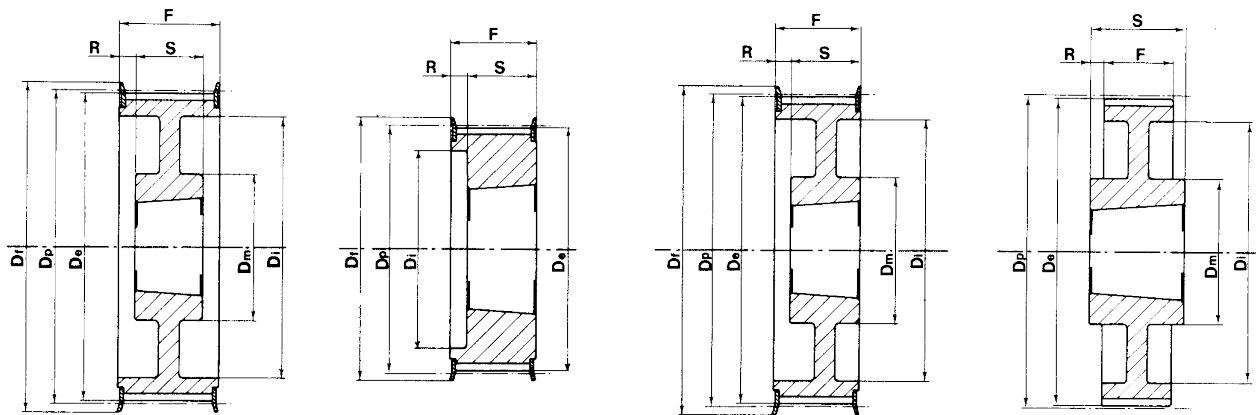
Tipo / Type
3F

Tipo / Type
3WF

Tipo / Type
3W

Tipo / Type
3A

Tipo / Type
4F

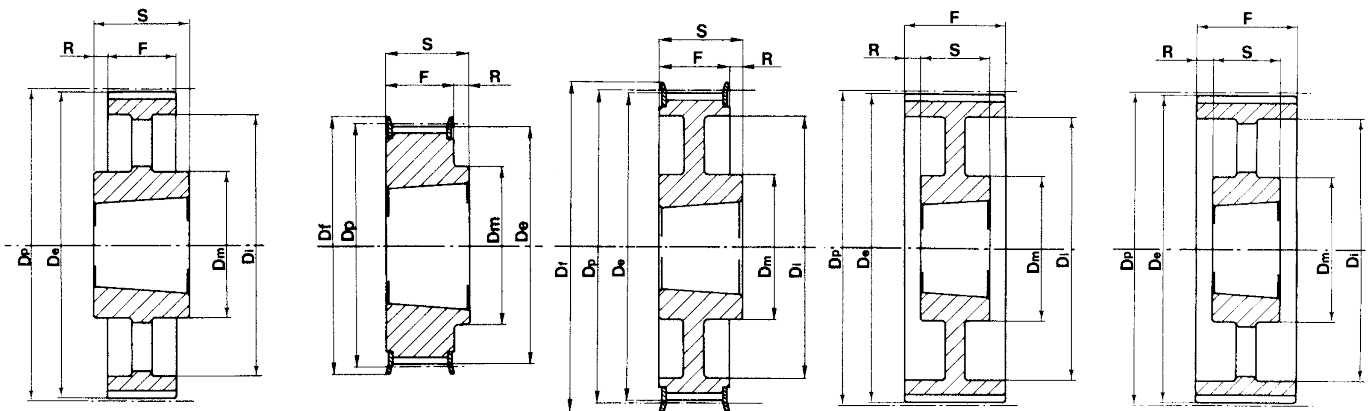


Tipo / Type
4WF

Tipo / Type
5F

Tipo / Type
5WF

Tipo / Type
7W



Tipo / Type
7A

Tipo / Type
8F

Tipo / Type
8WF

Tipo / Type
9W

Tipo / Type
9A

PULEGGE DENTATE PER BUSSOLA CONICA TIMING BELT PULLEYS FOR TAPER BUSHES

L 050 - 3/8" (9,525 mm)

Caratteristiche Features Merkmale Características	Descrizione Description Beschreibung Description	Tipo Type Typ Type	Codice flangia Flange code Bordscheiben Typ Code flasque Código brida	Bussola Bush Buchse Moyeu Casquillo	Foro max. Max. Bore Max. Bohrung Alesage max. Agujero max.	Dp	De	Df	Dm	Di	F	S	R	Peso Weight / Gewicht Poids / Peso Kg	
Acciaio / Steel / Stahl Acier / Acero	con flangia / with flanges mit Flanges / avec flasques / con tapetas	18L050	8F	FL058	1108	28	54,57	53,81	60,0	45	-	19,0	22,0	3,0	0,2
		19L050	8F	FL059	1108	28	57,61	56,84	64,0	45	-	19,0	22,0	3,0	0,2
		20L050	8F	FL060	1108	28	60,64	59,88	66,5	48	-	19,0	22,0	3,0	0,2
		21L050	8F	FL061	1108	28	63,67	62,91	70,0	48	-	19,0	22,0	3,0	0,3
		22L050	8F	FL062	1108	28	66,70	65,94	75,0	51	-	19,0	22,0	3,0	0,3
		23L050	8F	FL063	1108	28	69,73	68,97	79,0	54	-	19,0	22,0	3,0	0,4
		24L050	8F	FL063	1108	28	72,77	72,00	79,0	54	-	19,0	22,0	3,0	0,4
		25L050	8F	FL064	1108	28	75,80	75,04	82,5	56	-	19,0	22,0	3,0	0,5
		26L050	8F	FL065	1108	28	78,83	78,07	86,0	60	-	19,0	22,0	3,0	0,5
		27L050	8F	FL065	1108	28	81,86	81,10	86,0	62	-	19,0	22,0	3,0	0,6
		28L050	8F	FL066	1108	28	84,89	84,13	91,0	65	-	19,0	22,0	3,0	0,6
		30L050	8F	FL068	1108	28	90,96	90,20	97,0	70	-	19,0	22,0	3,0	0,8
		32L050	8F	FL070	1108	28	97,02	96,26	102,0	74	-	19,0	22,0	3,0	0,9
		36L050	8F	FL074	1108	28	109,15	108,39	115,0	85	-	19,0	22,0	3,0	1,2
		40L050	8F	FL078	1610	42	121,28	120,51	128,0	88	-	19,0	25,0	6,0	1,5
44L050	8WF	FL081	1610	42	133,40	132,64	142,0	88	110	19,0	25,0	6,0	1,8		
48L050	8WF	FL085	1610	42	145,53	144,77	150,0	88	120	19,0	25,0	6,0	2,3		
Ghisa / Cast iron Grauguss / Fonte Hierro fundido	senza flangia / without flanges ohne Flanschen sans flasques / sin tapetas	60L050	7W	-	1610	42	181,91	181,15	-	92	166	19,0	25,0	3,0	2,0
		72L050	7A	-	1610	42	218,30	217,53	-	92	202	19,0	25,0	3,0	3,0
		84L050	7A	-	1610	42	254,68	253,90	-	92	236	19,0	25,0	3,0	4,0
		96L050	7A	-	2012	50	291,06	290,30	-	106	270	19,0	32,0	6,5	5,5
		120L050	7A	-	2012	50	363,83	363,07	-	106	343	19,0	32,0	6,5	6,8

L 075 - 3/8" (9,525 mm)

Caratteristiche Features Merkmale Características	Descrizione Description Beschreibung Description	Tipo Type Typ Type	Codice flangia Flange code Bordscheiben Typ Code flasque Código brida	Bussola Bush Buchse Moyeu Casquillo	Foro max. Max. Bore Max. Bohrung Alesage max. Agujero max.	Dp	De	Df	Dm	Di	F	S	R	Peso Weight / Gewicht Poids / Peso Kg	
Acciaio / Steel / Stahl Acier / Acero	con flangia / with flanges mit Flanges / avec flasques / con tapetas	18L075	3F	FL058	1108	28	54,57	53,81	60,0	-	-	25,0	25,0	-	0,2
		19L075	3F	FL059	1108	28	57,61	56,84	64,0	-	-	25,0	25,0	-	0,3
		20L075	3F	FL060	1108	28	60,64	59,88	66,5	-	-	25,0	25,0	-	0,3
		21L075	3F	FL061	1108	28	63,67	62,91	70,0	-	-	25,0	25,0	-	0,4
		22L075	3F	FL062	1108	28	66,70	65,94	75,0	-	-	25,0	25,0	-	0,4
		23L075	3F	FL063	1108	28	69,73	68,97	79,0	-	-	25,0	25,0	-	0,4
		24L075	3F	FL063	1108	28	72,77	72,00	79,0	-	-	25,0	25,0	-	0,5
		25L075	3F	FL064	1108	28	75,80	75,04	82,5	-	-	25,0	25,0	-	0,6
		26L075	3F	FL065	1108	28	78,83	78,07	86,0	-	-	25,0	25,0	-	0,6
		27L075	3F	FL065	1108	28	81,86	81,10	86,0	-	-	25,0	25,0	-	0,7
		28L075	3F	FL066	1108	28	84,89	84,13	91,0	-	-	25,0	25,0	-	0,7
		30L075	3F	FL068	1108	28	90,96	90,20	97,0	-	-	25,0	25,0	-	0,9
		32L075	3F	FL070	1108	28	97,02	96,26	102,0	-	-	25,0	25,0	-	1,0
		36L075	3F	FL074	1610	42	109,15	108,39	115,0	-	-	25,0	25,0	-	1,2
		40L075	3F	FL078	1610	42	121,28	120,51	128,0	-	-	25,0	25,0	-	1,7
44L075	3WF	FL081	1610	42	133,40	132,64	142,0	90	110	25,0	25,0	-	2,1		
48L075	3WF	FL085	1610	42	145,53	144,77	150,0	92	120	25,0	25,0	-	2,5		
Ghisa / Cast iron Grauguss / Fonte Hierro fundido	senza flangia without flanges ohne Flanschen sans flasques sin tapetas	60L075	3W	-	1610	42	181,91	181,15	-	92	166	25,0	25,0	-	3,0
		72L075	3A	-	1610	42	218,30	217,53	-	92	202	25,0	25,0	-	4,0
		84L075	7A	-	2012	50	254,68	253,90	-	92	236	25,0	32,0	3,5	5,2
		96L075	7A	-	2012	50	291,06	290,30	-	106	270	25,0	32,0	3,5	6,5
		120L075	7A	-	2012	50	363,83	363,07	-	106	343	25,0	32,0	3,5	7,6

PULEGGE DENTATE PER BUSSOLA CONICA TIMING BELT PULLEYS FOR TAPER BUSHES

L 100 - 3/8" (9,525 mm)

Caratteristiche Features Merkmale Características	Descrizione Description Beschreibung Description Descripción	Tipo Type Typ Type Tipo	Codice flangia Flange code Bordscheiben Typ Code flasque Código brida	Bussola Bush Buchse Moyeu Casquillo	Foro max. Max. Bore Max. Bohrung Alesage max. Agujero max.	Dp	De	Df	Dm	Di	F	S	R	Peso Weight / Gewicht Poids / Peso Kg	
Acciaio / Steel / Stahl Acier / Acero	con flangia / with flanges mit Flanges / avec flasques / con tapetas	18L100	5F	FL058	1108	28	54,57	53,81	60,0	-	38	31,0	22,0	9,0	0,2
		19L100	5F	FL059	1108	28	57,61	56,84	64,0	-	38	31,0	22,0	9,0	0,3
		20L100	5F	FL060	1108	28	60,64	59,88	66,5	-	45	31,0	22,0	9,0	0,4
		21L100	5F	FL061	1108	28	63,67	62,91	70,0	-	45	31,0	22,0	9,0	0,4
		22L100	5F	FL062	1108	28	66,70	65,94	75,0	-	48	31,0	22,0	9,0	0,4
		23L100	5F	FL063	1108	28	69,73	68,97	79,0	-	52	32,0	22,0	10,0	0,5
		24L100	5F	FL063	1108	28	72,77	72,00	79,0	-	52	32,0	22,0	10,0	0,6
		25L100	5F	FL064	1108	28	75,80	75,04	82,5	-	54	32,0	22,0	10,0	0,6
		26L100	5F	FL065	1108	28	78,83	78,07	86,0	-	60	32,0	22,0	10,0	0,7
		27L100	5F	FL065	1108	28	81,86	81,10	86,0	-	60	32,0	22,0	10,0	0,8
		28L100	5F	FL066	1108	28	84,89	84,13	91,0	-	65	32,0	22,0	10,0	0,8
		30L100	5F	FL068	1210	32	90,96	90,20	97,0	-	71	32,0	25,0	7,0	0,9
		32L100	5F	FL070	1210	32	97,02	96,26	102,0	-	75	32,0	25,0	7,0	1,0
		36L100	5F	FL074	1610	42	109,15	108,39	115,0	-	86	32,0	25,0	7,0	1,4
		40L100	5F	FL078	1610	42	121,28	120,51	128,0	-	96	32,0	25,0	7,0	1,7
		44L100	5WF	FL081	1610	42	133,40	132,64	142,0	90	110	32,0	25,0	7,0	2,3
		48L100	5WF	FL085	1610	42	145,53	144,77	150,0	92	120	32,0	25,0	7,0	2,7
Ghisa / Cast iron Grauguss / Fonte Hierro fundido	senza flangia without flanges ohne Flanschen sans flasques sin tapetas	60L100	9W	-	1610	42	181,91	181,15	-	92	166	32,0	25,0	3,5	2,4
		72L100	3A	-	2012	50	218,30	217,53	-	92	202	32,0	32,0	-	4,4
		84L100	3A	-	2012	50	254,68	253,90	-	92	236	32,0	32,0	-	6,0
		96L100	3A	-	2012	50	291,06	290,30	-	106	270	32,0	32,0	-	7,1
		120L100	3A	-	2012	50	363,83	363,07	-	106	343	32,0	32,0	-	8,5

H 100 - 1/2" (12,7 mm)

Caratteristiche Features Merkmale Características	Descrizione Description Beschreibung Description Descripción	Tipo Type Typ Type Tipo	Codice flangia Flange code Bordscheiben Typ Code flasque Código brida	Bussola Bush Buchse Moyeu Casquillo	Foro max. Max. Bore Max. Bohrung Alesage max. Agujero max.	Dp	De	Df	Dm	Di	F	S	R	Peso Weight / Gewicht Poids / Peso Kg	
Acciaio / Steel / Stahl Acier / Acero	con flangia / with flanges mit Flanges / avec flasques / con tapetas	16H100	5F	FL061	1108	28	64,68	63,31	70,0	-	45	31,0	22,0	9,0	0,4
		18H100	5F	FL063	1210	32	72,77	71,39	79,0	-	52	31,0	25,0	6,0	0,5
		19H100	5F	FL064	1210	32	76,81	75,44	82,5	-	56	31,0	25,0	6,0	0,6
		20H100	5F	FL076	1210	32	80,55	79,48	87,0	-	60	31,0	25,0	6,0	0,7
		21H100	5F	FL066	1210	32	84,89	83,52	91,0	-	64	32,0	25,0	7,0	0,8
		22H100	5F	FL067	1210	32	88,94	87,56	94,0	-	67	32,0	25,0	7,0	0,9
		23H100	5F	FL068	1610	42	92,98	91,61	97,0	-	70	32,0	25,0	7,0	0,9
		24H100	5F	FL070	1610	42	97,02	95,65	102,0	-	74	32,0	25,0	7,0	1,0
		25H100	5F	FL071	1610	42	101,06	99,69	106,0	-	77	32,0	25,0	7,0	1,0
		26H100	5F	FL072	1610	42	105,11	103,73	112,0	-	82	32,0	25,0	7,0	1,2
		27H100	5F	FL074	1610	42	109,15	107,78	115,0	-	85	32,0	25,0	7,0	1,3
		28H100	5F	FL075	1610	42	113,19	111,82	120,0	-	90	32,0	25,0	7,0	1,5
		30H100	5F	FL078	1610	42	121,28	119,90	128,0	-	98	32,0	25,0	7,0	1,7
		32H100	5WF	FL080	1610	42	129,36	127,99	135,0	80	106	32,0	25,0	7,0	2,0
		36H100	5WF	FL085	1610	42	145,53	144,16	150,0	92	121	32,0	25,0	7,0	2,7
		40H100	5WF	FL090	1610	42	161,70	160,33	168,0	92	138	32,0	25,0	7,0	3,6
		44H100	3WF	FL095	2012	50	177,87	176,50	184,0	106	152	32,0	32,0	-	3,8
48H100	3WF	FL100	2012	50	194,04	192,67	200,0	106	169	32,0	32,0	-	3,2		
Ghisa / Cast iron Grauguss / Fonte Hierro fundido	senza flangia without flanges ohne Flanschen sans flasques sin tapetas	60H100	9A	-	2012	50	242,55	241,18	-	92	223	34,0	32,0	1,0	4,8
		72H100	9A	-	2012	50	291,06	289,69	-	92	270	34,0	32,0	1,0	5,7
		84H100	9A	-	2012	50	339,57	338,20	-	92	318	34,0	32,0	1,0	6,8
		96H100	7A	-	2517	60	388,08	386,71	-	106	366	34,0	45,0	5,5	8,2
		120H100	7A	-	2517	60	485,10	483,73	-	106	462	34,0	45,0	5,5	12,1

PULEGGE DENTATE PER BUSSOLA CONICA TIMING BELT PULLEYS FOR TAPER BUSHES

H 200 - 1/2" (12,7 mm)

Caratteristiche Features Merkmale Características	Descrizione Description Beschreibung Descripción	Tipo Type Typ Tipo	Codice flangia Flange code Bordscheiben Typ Code flasque Código brida	Bussola Bush Buchse Moyeu Casquillo	Foro max. Max. Bore Max. Bohrung Alesage max. Agujero max.	Dp	De	Df	Dm	Di	F	S	R	Peso Weight / Gewicht Poids / Peso Kg	
Acciaio / Steel / Stahl Acier / Acero	con flangia / with flanges mit Flanges / avec flasques / con tapetas	18H200	5F	FL063	1210	32	72,77	71,39	79,0	-	52	58,0	25,0	33,0	0,8
		19H200	5F	FL064	1210	32	76,81	75,44	82,5	-	56	58,0	25,0	33,0	0,9
		20H200	5F	FL076	1610	42	80,55	79,48	87,0	-	60	58,0	25,0	33,0	1,0
		21H200	5F	FL066	1610	42	84,89	83,52	91,0	-	64	58,0	25,0	33,0	1,7
		22H200	5F	FL067	1610	42	88,94	87,56	94,0	-	67	58,0	25,0	33,0	1,5
		23H200	5F	FL068	1610	42	92,98	91,61	97,0	-	70	58,0	25,0	33,0	1,8
		24H200	5F	FL070	1610	42	97,02	95,65	102,0	-	74	58,0	25,0	33,0	1,5
		25H200	5F	FL071	1610	42	101,06	99,69	106,0	-	77	58,0	25,0	33,0	1,5
		26H200	5F	FL072	1610	42	105,11	103,73	112,0	-	82	58,0	25,0	33,0	1,8
		27H200	5F	FL074	1610	42	109,15	107,78	115,0	-	85	58,0	25,0	33,0	1,9
		28H200	5F	FL075	1610	42	113,19	111,82	120,0	-	90	58,0	25,0	33,0	1,9
		30H200	5F	FL078	1610	42	121,28	119,90	128,0	-	98	58,0	25,0	33,0	2,3
		32H200	5F	FL080	2012	50	129,36	127,99	135,0	-	106	58,0	32,0	26,0	3,0
		36H200	5WF	FL085	2012	50	145,53	144,16	150,0	102	121	58,0	32,0	26,0	3,0
		40H200	5WF	FL090	2012	50	161,70	160,33	168,0	106	138	58,0	32,0	26,0	3,6
44H200	5WF	FL095	2012	50	177,87	176,50	184,0	106	152	58,0	32,0	26,0	4,0		
48H200	5WF	FL100	2517	60	194,04	192,67	200,0	119	169	58,0	45,0	13,0	4,6		
Ghisa / Cast iron Grauguss / Fonte Hierro fundido	senza flangia without flanges ohne Flanschen sans flasques sin tapetas	60H200	9A	-	2517	60	242,55	241,18	-	119	223	60,0	45,0	7,5	7,0
		72H200	9A	-	2517	60	291,06	289,69	-	119	270	60,0	45,0	7,5	8,0
		84H200	9A	-	2517	60	339,57	338,20	-	119	318	60,0	45,0	7,5	9,0
		96H200	9A	-	2517	60	388,08	386,71	-	119	366	60,0	45,0	7,5	10,0
		120H200	9A	-	2517	60	485,10	483,73	-	119	462	60,0	45,0	7,5	13,4

PULEGGE DENTATE PER BUSSOLA CONICA

TIMING BELT PULLEYS FOR TAPER BUSHES

H 300 - 1/2" (12,7 mm)

Caratteristiche Features Merkmale Características Características	Descrizione Description Beschreibung Description Descripción	Tipo Type Typ Type Tipo	Codice flangia Flange code Bordscheiben Typ Code flasque Código brida	Bussola Bush Buchse Moyeu Casquillo	Foro max. Max. Bore Max. Bohrung Alesage max. Agujero max.	Dp	De	Df	Dm	Di	F	S	R	Peso Weight / Gewicht Poids / Peso Kg	
Acciaio / Steel / Stahl Acier / Acero	con flangia / with flanges mit Flanges / avec flasques / con tapetas	20H300	4F	FL076	1615	42	80,85	79,48	87,0	-	60	84,0	38,0	23,0	1,5
		21H300	4F	FL066	1615	42	84,89	83,52	91,0	-	64	84,0	38,0	23,0	1,2
		22H300	4F	FL067	1615	42	88,94	87,56	94,0	-	67	84,0	38,0	23,0	1,6
		23H300	4F	FL068	1615	42	92,98	91,61	97,0	-	70	84,0	38,0	23,0	1,8
		24H300	4F	FL070	1615	42	97,02	95,65	102,0	-	74	84,0	38,0	23,0	2,0
		25H300	4F	FL071	1615	42	101,06	99,69	106,0	-	77	84,0	38,0	23,0	2,0
		26H300	4F	FL072	1615	42	105,11	103,73	112,0	-	82	84,0	38,0	23,0	2,7
		27H300	4F	FL074	2012	50	109,15	107,78	115,0	-	85	84,0	32,0	26,0	3,0
		28H300	4F	FL075	2012	50	113,19	111,82	120,0	-	90	84,0	32,0	26,0	2,4
		30H300	4F	FL078	2012	50	121,28	119,90	128,0	-	98	84,0	32,0	26,0	2,9
		32H300	4F	FL080	2517	60	129,36	127,99	135,0	-	106	84,0	45,0	19,5	3,3
		36H300	4F	FL085	2517	60	145,53	144,16	150,0	-	121	84,0	45,0	19,5	4,5
		40H300	4F	FL090	2517	60	161,70	160,33	168,0	-	138	84,0	45,0	19,5	6,0
		44H300	9WF	FL095	2517	60	177,87	176,50	184,0	119	152	86,0	45,0	20,5	6,6
48H300	9WF	FL100	2517	60	194,04	192,67	200,0	119	169	86,0	45,0	20,5	7,6		
Ghisa / Cast iron Grauguss / Fonte Hierro fundido	senza flangia / without flanges ohne Flanschen sans flasques sin tapetas	60H300	9A	-	2517	60	242,55	241,18	-	119	223	86,0	45,0	20,5	8,4
		72H300	9A	-	2517	60	291,06	289,69	-	119	270	86,0	45,0	20,5	10,4
		84H300	9A	-	2517	60	339,57	338,20	-	119	318	86,0	45,0	20,5	12,5
		96H300	9A	-	3030	75	388,08	386,71	-	150	366	86,0	76,0	5,0	14,2
		120H300	9A	-	3030	75	485,10	483,73	-	150	462	86,0	76,0	5,0	18,8

XH 200 - 7/8" (22,225 mm)

Caratteristiche Features Merkmale Características Características	Descrizione Description Beschreibung Description Descripción	Tipo Type Typ Type Tipo	Codice flangia Flange code Bordscheiben Typ Code flasque Código brida	Bussola Bush Buchse Moyeu Casquillo	Foro max. Max. Bore Max. Bohrung Alesage max. Agujero max.	Dp	De	Df	Dm	Di	F	S	R	Peso Weight / Gewicht Poids / Peso Kg	
Ghisa / Cast iron Grauguss / Fonte Hierro fundido	con flangia / with flanges mit Flanges / avec flasques / con tapetas	18XH200	5F	FL155	2517	60	127,34	124,55	140,0	-	95	64	45	19,0	
		20XH200	5F	FL157	2517	60	141,49	138,69	155,0	-	110	64	45	19,0	
		22XH200	5F	FL159	2517	60	155,64	152,84	170,0	-	120	64	45	19,0	
		24XH200	5F	FL161	2517	60	169,79	166,99	184,0	-	135	64	45	19,0	
		26XH200	5F	FL163	2517	60	183,94	181,14	198,0	-	150	64	45	19,0	
		28XH200	4WF	FL165	2517	60	198,08	195,29	212,0	120	165	64	45	9,5	
		30XH200	4WF	FL167	2517	60	212,23	209,44	227,0	120	180	64	45	9,5	
		32XH200	4WF	FL169	2517	60	226,38	223,59	240,0	120	195	64	45	9,5	
		40XH200	4WF	FL177	3020	75	282,98	280,18	297,0	160	245	64	51	9,5	
	senza flangia / without flanges ohne Flanschen sans flasques sin tapetas	48XH200	9W	-	3020	75	339,57	336,78	-	160	300	64	51	6,5	
		60XH200	7A	-	3535	90	424,47	421,67	-	190	385	64	89	12,5	
		72XH200	7A	-	3535	90	509,40	506,56	-	190	470	64	89	12,5	
		84XH200	7A	-	3535	90	594,25	591,46	-	190	555	64	89	12,5	
		96XH200	7A	-	3535	90	679,15	676,35	-	190	640	64	89	12,5	
		120XH200	7A	-	3535	90	848,93	846,14	-	190	810	64	89	12,5	

PULEGGE DENTATE PER BUSSOLA CONICA TIMING BELT PULLEYS FOR TAPER BUSHES

XH 300 - 7/8" (22,225 mm)

Caratteristiche Features Merkmale Características Características	Descrizione Description Beschreibung Description Descripción	Tipo Type Typ Type Tipo	Codice flangia Flange code Bordscheiben Typ Code flasque Código brida	Bussola Bush Buchse Moyeu Casquillo	Foro max. Max. Bore Max. Bohrung Alesage max. Agujero max.	Dp	De	Df	Dm	Di	F	S	R	Peso Weight / Gewicht Poids / Peso Kg	
Ghisa / Cast iron Grauguss / Fonte Hierro fundido	con flangia / with flanges mit Flanges / avec flasques / con tapetas	18XH300	5F	FL155	2517	60	127,34	124,55	140,0	-	95	90	45,0	45,0	
		20XH300	5F	FL157	2517	60	141,49	138,69	155,0	-	110	90	45,0	45,0	
		22XH300	5F	FL159	2517	60	155,64	152,84	170,0	-	120	90	45,0	45,0	
		24XH300	5F	FL161	2517	60	169,79	166,99	184,0	-	135	90	45,0	45,0	
		26XH300	5F	FL163	2517	60	183,94	181,14	198,0	-	150	90	45,0	45,0	
		28XH300	5F	FL165	3020	75	198,08	195,29	212,0	-	165	90	51,0	39,0	
		30XH300	5F	FL167	3020	75	212,23	209,44	227,0	-	180	90	51,0	39,0	
		32XH300	5F	FL169	3020	75	226,38	223,59	240,0	-	195	90	51,0	39,0	
		40XH300	4WF	FL177	3020	75	282,98	280,18	297,0	160	245	90	51,0	19,5	
	senza flangia / without flanges ohne Flanschen / sans flasques sin tapetas	48XH300	9A	-	3020	75	339,57	336,78	-	160	300	90	51,0	19,5	
		60XH300	9A	-	3535	90	424,47	421,67	-	190	385	90	89,0	0,5	
		72XH300	9A	-	3535	90	509,40	506,56	-	190	470	90	89,0	0,5	
		84XH300	7A	-	4040	100	594,25	591,46	-	190	555	90	102,0	6,0	
		96XH300	7A	-	4040	100	679,15	676,35	-	190	640	90	102,0	6,0	
		120XH300	7A	-	4040	100	848,93	846,14	-	190	810	90	102,0	6,0	

XH 400 - 7/8" (22,225 mm)

Caratteristiche Features Merkmale Características Características	Descrizione Description Beschreibung Description Descripción	Tipo Type Typ Type Tipo	Codice flangia Flange code Bordscheiben Typ Code flasque Código brida	Bussola Bush Buchse Moyeu Casquillo	Foro max. Max. Bore Max. Bohrung Alesage max. Agujero max.	Dp	De	Df	Dm	Di	F	S	R	Peso Weight / Gewicht Poids / Peso Kg	
Ghisa / Cast iron Grauguss / Fonte Hierro fundido	con flangia / with flanges mit Flanges / avec flasques / con tapetas	18XH400	5F	FL155	2517	60	127,34	124,55	140,0	-	95	119	45,0	74,0	
		20XH400	5F	FL157	2517	60	141,49	138,69	155,0	-	110	119	45,0	74,0	
		22XH400	5F	FL159	2517	60	155,64	152,84	170,0	-	120	119	45,0	74,0	
		24XH400	5F	FL161	3020	75	169,79	166,99	184,0	-	135	119	51,0	68,0	
		26XH400	5F	FL163	3020	75	183,94	181,14	198,0	-	150	119	51,0	68,0	
		28XH400	5F	FL165	3020	75	198,08	195,29	212,0	-	165	119	51,0	68,0	
		30XH400	5F	FL167	3020	75	212,23	209,44	227,0	-	180	119	51,0	68,0	
		32XH400	5F	FL169	3020	75	226,38	223,59	240,0	-	195	119	51,0	68,0	
		40XH400	4WF	FL177	3535	90	282,98	280,18	297,0	160	245	119	89,0	15,0	
	senza flangia / without flanges ohne Flanschen / sans flasques sin tapetas	48XH400	9W	-	3535	90	339,57	336,78	-	160	300	119	89,0	15,0	
		60XH400	9A	-	4040	100	424,47	421,67	-	190	385	119	102,0	8,5	
		72XH400	9A	-	4040	100	509,40	506,56	-	190	470	119	102,0	8,5	
		84XH400	9A	-	4040	100	594,25	591,46	-	190	555	119	102,0	8,5	
		96XH400	9A	-	4040	100	679,15	676,35	-	190	640	119	102,0	8,5	
		120XH400	9A	-	4040	100	848,93	846,14	-	190	810	119	102,0	8,5	

Discover Your Local Contacts

The local partner of choice
for sustainable power transmission belting solutions
around the globe.



General contact information:

Megadyne

Via Trieste, 16

Via S. Lucia 114 - 10075 Mathi (Torino)

Italy

megadynegroup.com

megadynegroup.com/en/contact-us



Scan the QR code
and find your local
contact

