



MODSORT® PRODUCT RANGE EU

STANDARD | HEAVY DUTY | DUAL DIVERT
DUAL DIVERT-HEAVY DUTY | MODTURN
INTERMEDIATE & ACCESSORIES

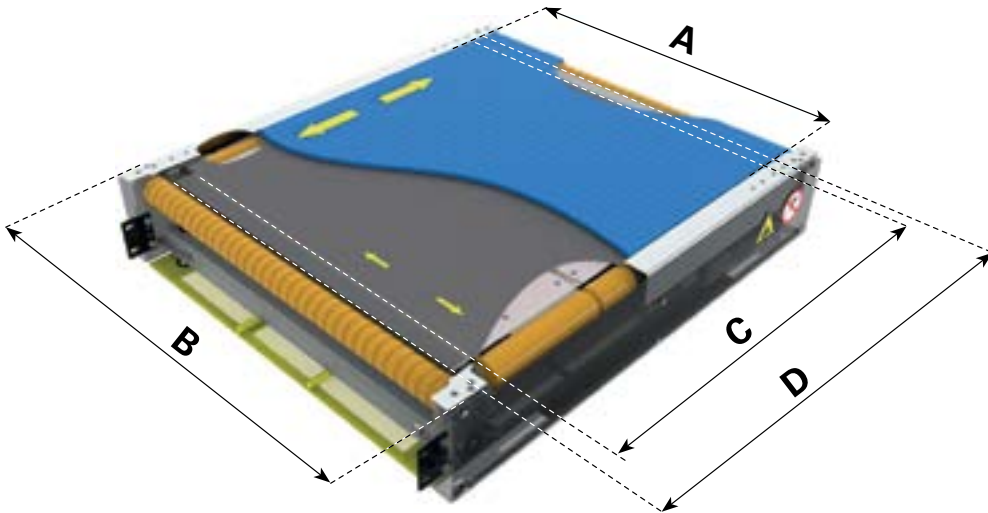


PATENTED. For more information
visit www.modsort.com



STANDARD VERSION

The Modsort® standard module is an all 24-Volt motorized driven roller (MDR) based right angle transfer and/or diverter station. It integrates easily with other MDR-based conveyors and can also be used to integrate to more traditional conveyor types, providing all interlocks and controls links are properly established. The Modsort standard module is designed to handle any kind of package, from small packages like polybags to medium sizes traditional packages. The Modsort standard module can be installed as a true right-angle transfer or can be utilized as an on-the-fly diverter station.



MODSORT TRANSFER MODULE SIZES

ITEM DESCRIPTION COMPLETE UNIT	Size	LENGTH	INTERNAL WIDTH "A"	EXTERNAL WIDTH "B"	DIVERT ZONE LENGTH "C"	TRANSFER ZONE "D"	HEIGHT FRAME	UNIT WEIGHT
CONTROL CARD RIGHT SIDE		mm (inch)						Kg (lbs.)
MS-ST1-RH-AI2-L30W20-16	1	762 (30)	406 (16)	500 (20)	530 (21)	620 (24)	202 (8)	66 (145)
MS-ST2-RH-AI2-L30W26-22	2	762 (30)	559 (22)	653 (26)	530 (21)	620 (24)	202 (8)	79 (174)
MS-ST3-RH-AI2-L36W20-16	3	914 (36)	406 (16)	500 (20)	682 (27)	772 (30.4)	202 (8)	77 (170)
MS-ST4-RH-AI2-L36W26-22	4	914 (36)	559 (22)	653 (26)	682 (27)	772 (30.4)	202 (8)	91 (200)
MS-ST5-RH-AI2-L36W32-28	5	914 (36)	711 (28)	805 (32)	682 (27)	772 (30.4)	202 (8)	103 (227)
MS-ST6-RH-AI2-L42W26-22	6	1066 (42)	559 (22)	653 (26)	834 (33)	924 (36.4)	202 (8)	103 (227)
MS-ST7-RH-AI2-L42W32-28	7	1066 (42)	711 (28)	805 (32)	834 (33)	924 (36.4)	202 (8)	116 (256)
MS-ST8-RH-AI2-L42W38-34	8	1066 (42)	864 (34)	958 (38)	834 (33)	924 (36.4)	202 (8)	129 (284)

Networked Control Card Ai2

Divert Zone: The effective area of the divert belt.

Transfer Zone: The effective area of support of the RT belt (includes the support plates).

WHAT YOU NEED TO KNOW

WHAT IT DOES

- ✓ Receives product
- ✓ Passes product straight through
- ✓ Diverts product left or right
- ✓ Can be used to divert in two different modes:
 - Stop and divert full 90 degrees
 - Divert on the fly (blended vector angle)

HOW IT WORKS

System Plast® 2253RT Belt (blue) is used as a transfer belt to receive and pass product through or when the divert belt is activated diverts packages left or right. Both belts are driven by Industry standard MDR Technology, with a Regal Rexnord proprietary design lag coating.

BENEFITS

- ✓ Flexible
 - Modular design can be easily integrated into existing conveyor systems and units can be re-arranged in case of changing layouts
 - Ability to convey a wide array of products
 - Run smaller packages and polybags without the “gaps” that are associated with pop-up transfer modules
 - High resolution package control
- ✓ Utilizes unique System Plast 2253 Roller Top belt technology for optimum precision
- ✓ Safe
 - No pushers, so no risk of people getting injured or product getting damaged
 - Low voltage (24VDC, no conduit required)
 - Low noise (< 70 dB)
- ✓ Low operating cost
 - Easy maintenance through minimum spare parts requirements
 - Energy savings as high as 50%- 60% compared to traditional conveyors

APPLICATION CONSIDERATION

Max Theoretical Throughput: 2400 pph

Capacity Live Load - WEIGHT (Kg): Min. 0.1 - Max. 22.7

Noise @ max speed: < 70 dB

Control card - Networked ERSC:

- Discrete program capability
- Interfaces to PLC via Ethernet/IP™* / Modbus®* / Profinet®*
- Control two MDR's per card
- Change Motor parameters on the fly

Control card position: Left or right side, referring to RT drive roller (travel direction)



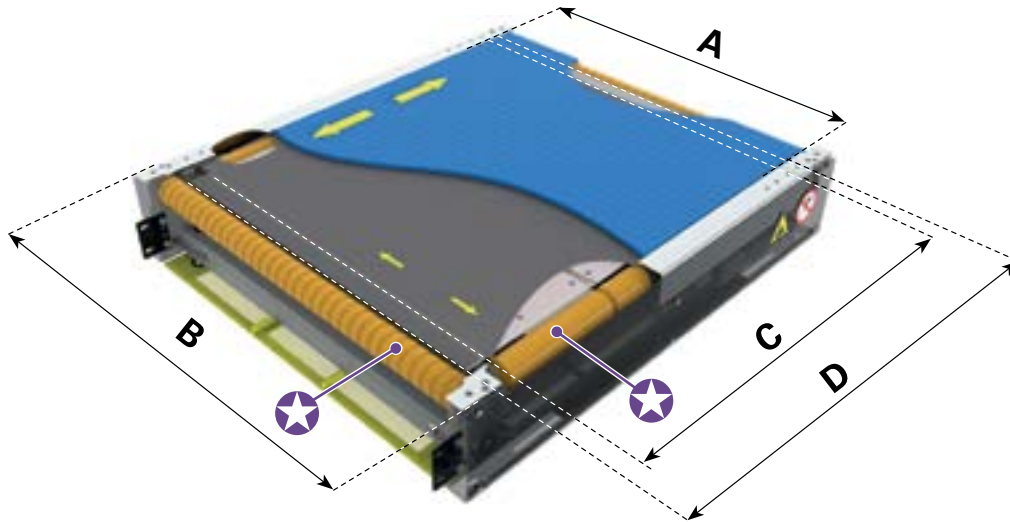
* The following are believed to be the trademarks and/or trade names of their respective owners and are not owned or controlled by Regal Rexnord Corporation. EtherNet/IP: ODVA, Inc.; Modbus: Schneider Automation; Profinet: Profibus Nutzerorganisation e.V.



HEAVY DUTY VERSION

The Modsort® Heavy Duty module is an all 24-Volt motorized driven roller (MDR) based right angle transfer and/or diverter station. It integrates easily with other MDR-based conveyors and can also be used to integrate to more traditional conveyor types, providing all interlocks and controls links are properly established. The Modsort Heavy Duty module can handle any kind of package, from small packages like polybags to medium sizes traditional packages.

It is designed to manage also heavier packages up to 30 Kgs. The Modsort Heavy Duty module can be installed as a true right-angle transfer or can be utilized as an on-the-fly diverter station.



★ Double PulseRoller®* Senergy®* 3 Stage MDRs with proprietary drive lagging.



MODSORT HEAVY DUTY TRANSFER MODULE SIZES

ITEM DESCRIPTION COMPLETE UNIT	Size	LENGTH	INTERNAL WIDTH "A"	EXTERNAL WIDTH "B"	DIVERT ZONE LENGTH "C"	TRANSFER ZONE "D"	HEIGHT FRAME	UNIT WEIGHT
								Kg (lbs.)
mm (inch)								
MS-HD2-AI2-L30W26-22	2	762 (30)	559 (22)	653 (26)	530 (21)	620 (24)	202 (8)	79 (174)
MS-HD4-AI2-L36W26-22	4	914 (36)	559 (22)	653 (26)	682 (27)	772 (30.4)	202 (8)	91 (200)
MS-HD5-AI2-L36W32-28	5	914 (36)	711 (28)	805 (32)	682 (27)	772 (30.4)	202 (8)	103 (227)
MS-HD6-AI2-L42W26-22	6	1066 (42)	559 (22)	653 (26)	834 (33)	924 (36.4)	202 (8)	103 (227)
MS-HD7-AI2-L42W32-28	7	1066 (42)	711 (28)	805 (32)	834 (33)	924 (36.4)	202 (8)	116 (256)
MS-HD8-AI2-L42W38-34	8	1066 (42)	864 (34)	958 (38)	834 (33)	924 (36.4)	202 (8)	129 (284)

Networked Control Card Ai2

Divert Zone: The effective area of the divert belt.

Transfer Zone: The effective area of support of the RT belt (includes the support plates).

* The following are believed to be the trademarks and/or trade names of their respective owners and are not owned or controlled by Regal Rexnord Corporation. PulseRoller, Senergy: Insight Automation, Inc.

WHAT YOU NEED TO KNOW

WHAT IT DOES

- ✓ Receives product
- ✓ Passes product straight through
- ✓ Diverts product left or right
- ✓ Can be used to divert in two different modes:
 - Stop and divert full 90 degrees
 - Divert on the fly (blended vector angle)

HOW IT WORKS

System Plast® 2253RT Belt (blue) used as a transfer belt to receive and pass product through or when the divert belt is activated diverts packages left or right. Both belts are driven by Industry standard MDR Technology, with a Regal Rexnord proprietary design lag coating.

BENEFITS

- ✓ Designed for managing also heavy loads (up to 30 Kgs weight)
- ✓ Flexible
 - Modular design can be easily integrated into existing conveyor systems and units can be re-arranged in case of changing layouts
 - Ability to convey a wide array of products
 - Run smaller packages and polybags without the “gaps” that are associated with pop-up transfer modules
 - High resolution package control
- ✓ Utilizes unique System Plast 2253 Roller Top belt technology for optimum precision
- ✓ Safe
 - No pushers, so no risk of people getting injured or product getting damaged
 - Low voltage (24VDC, no conduit required)
 - Low noise (< 70 dB)
- ✓ Low operating cost
 - Easy maintenance through minimum spare parts requirements
 - Energy savings as high as 50%- 60% compared to traditional conveyors

APPLICATION CONSIDERATION

Max Theoretical Throughput: 2400 pph

Capacity Live Load - WEIGHT (Kg): Min. 0.1 - Max. 30

Noise @ max speed: < 70 dB

Control card - Networked ERSC:

- Discrete program capability
- Interfaces to PLC via Ethernet/IP™*
- Control two MDR's per card
- Change Motor parameters on the fly

Control card position: Left or right side, referring to RT drive roller (travel direction)



* EtherNet/IP is believed to be the trademark and/or trade names of ODVA, Inc. and is not owned or controlled by Regal Rexnord Corporation.

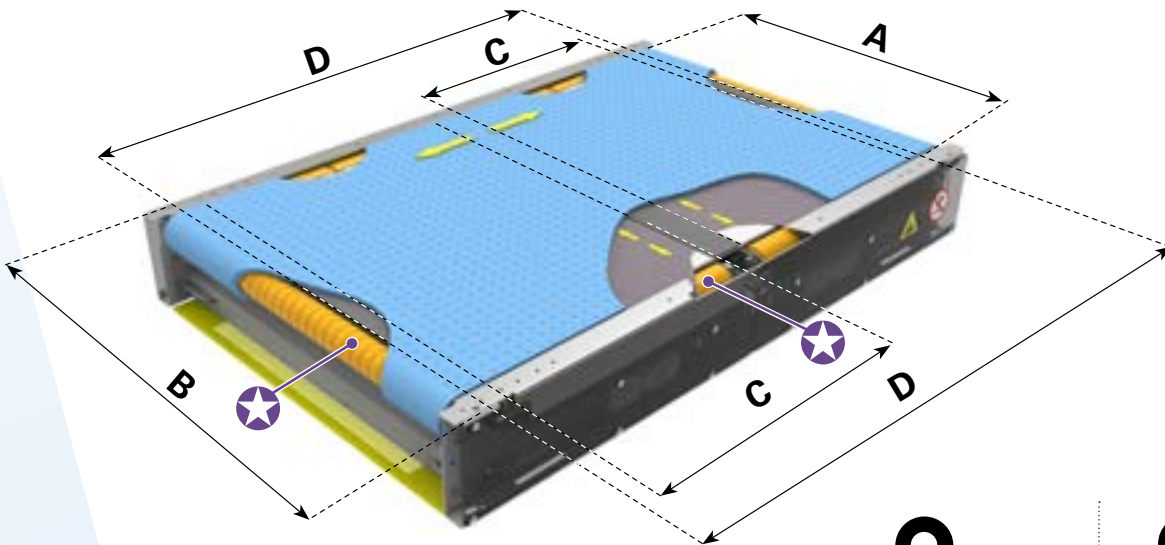


DUAL DIVERT & DUAL DIVERT HEAVY DUTY VERSIONS

The Modsort® Dual Divert module is an all 24-Volt motorized driven roller (MDR) based right angle transfer and/or diverter station. It integrates easily with other MDR-based conveyors and can also be used to integrate to more traditional conveyor types, providing all interlocks and controls links are properly established. The Modsort Dual Divert module is designed to handle smaller, more problematic packages such as polybags and small packages, but it can also handle more traditional boxes. The Modsort Dual Divert module can be installed as a true right-angle transfer or can be utilized as an on-the-fly diverter station.

The Dual Divert version is designed to manage up to 25 Kgs both as carryable weight on the whole unit and for each diverter.

The Dual Divert Heavy Duty version is designed to manage also heavier packages. Up to 50 Kgs overall carryable weight on the whole unit, 30 Kg for each diverter.



★ Double PulseRoller®* Senergy®* 3 Stage MDRs with proprietary drive lagging.
For Heavy Duty only.



DUAL DIVERT



DUAL DIVERT HEAVY DUTY

MODSORT DUAL DIVERT & DUAL DIVERT HEAVY DUTY TRANSFER MODULE SIZES

ITEM DESCRIPTION COMPLETE UNIT		Size	LENGTH	INTERNAL WIDTH "A"	EXTERNAL WIDTH "B"	DIVERT ZONE LENGTH "C"	TRANSFER ZONE "D"	HEIGHT FRAME	UNIT WEIGHT	
DUAL DIVERT	DUAL DIVERT HEAVY DUTY								DUAL DIVERT	DUAL DIVERT HEAVY DUTY
									Kg (lbs.)	
MS-2D-AI2-L56W20-16	-	1, 3	1422 (56)	406 (16)	500 (20)	555 - each divert zone (22)	1275 (50)	200 (8)	80 (176.4)	-
MS-2D-AI2-L56W26-22	MS-HD2D-AI2-L56W26-22	2, 4, 6	1422 (56)	559 (22)	653 (26)		1275 (50)	200 (8)	90 (198.4)	105 (231.4)
MS-2D-AI2-L56W32-28	MS-HD2D-AI2-L56W32-28	5, 7	1422 (56)	711 (28)	805 (32)		1275 (50)	200 (8)	100 (220.4)	115 (253.5)
MS-2D-AI2-L56W38-34	MS-HD2D-AI2-L56W38-34	8	1422 (56)	864 (34)	958 (38)		1275 (50)	200 (8)	125 (275.5)	140 (308.6)
MS-2D-AI2-L56W40-37	MS-HD2D-AI2-L56W40-37	9	1422 (56)	922 (36)	1029 (40)		1275 (50)	200 (8)	130 (286.6)	145 (319.6)

Networked Control Card Ai2

Divert Zone: The effective area of the divert belt.

Transfer Zone: The effective area of support of the RT belt (includes the support plates).

* The following are believed to be the trademarks and/or trade names of their respective owners and are not owned or controlled by Regal Rexnord Corporation. PulseRoller, Senergy: Insight Automation, Inc.

WHAT YOU NEED TO KNOW

WHAT IT DOES

- ✓ Receives product
- ✓ Passes product straight through
- ✓ Diverts product left or right
- ✓ Can be used to divert in two different modes:
 - Stop and divert full 90 degrees
 - Divert on the fly (blended vector angle)

HOW IT WORKS

System Plast® 2253RT Belt (blue) used as a transfer belt to receive and pass product through or when the divert belt is activated diverts packages left or right. Both belts are driven by Industry standard MDR Technology, with a Regal Rexnord proprietary design lag coating.

BENEFITS

- ✓ Designed for handling smaller, more problematic packages such as polybags and small packages
- ✓ Provide two active transfer zones by the mean of two divert assembly
- ✓ Flexible
 - Modular design can be easily integrated into existing conveyor systems and units can be re-arranged in case of changing layouts
 - Ability to convey a wide array of products
 - Run smaller packages and polybags without the “gaps” that are associated with pop-up transfer modules
 - High resolution package control
- ✓ Utilizes unique System Plast 2253 Roller Top belt technology for optimum precision
- ✓ Safe
 - No pushers, so no risk of people getting injured or product getting damaged
 - Low voltage (24VDC, no conduit required)
 - Low noise (< 70 dB)
- ✓ Low operating cost
 - Easy maintenance through minimum spare parts requirements
 - Energy savings as high as 50%- 60% compared to traditional conveyors

APPLICATION CONSIDERATION

Max Theoretical Throughput: 4000 pph calculated on a 15” (381mm) long parcel

Capacity Live Load per package Dual Divert (per single divert) - WEIGHT (Kg): Min. 0.1 - Max. 25

Capacity Live Load per package Dual Divert Heavy Duty (per single divert) - WEIGHT (Kg): Min. 0.1 - Max. 30

Noise @ max speed: < 70 dB

Control card - Networked ERSC:

- Discrete program capability
- Interfaces to PLC via Ethernet/IP™*
- Control two MDR's per card
- Change Motor parameters on the fly

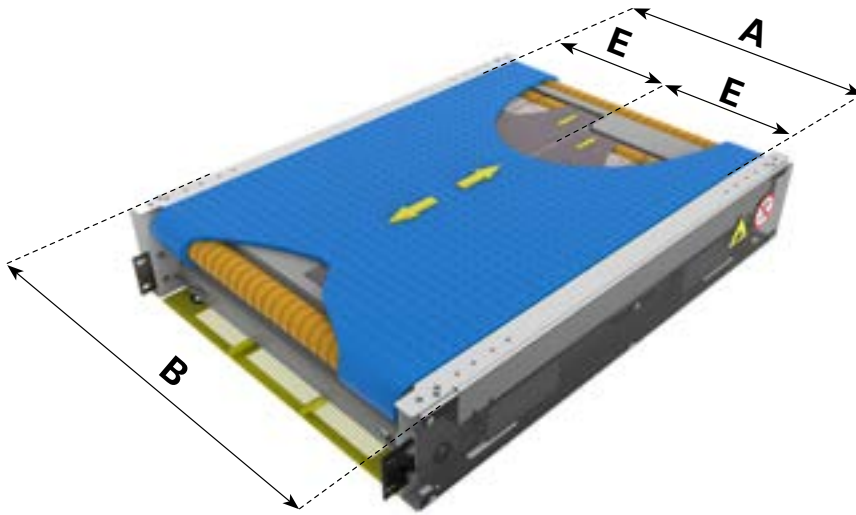
Control card position: Right side, referring to RT drive roller (travel direction)



* EtherNet/IP is believed to be the trademark and/or trade names of ODVA, Inc. and is not owned or controlled by Regal Rexnord Corporation.

MODTURN VERSION

The Modsort® Modturn module is an all 24-Volt motorized driven roller (MDR) based product rotation and transport station. It integrates easily with other MDR-based conveyors and can also be used to integrate to more traditional conveyor types, providing all interlocks and controls links are properly established. The Modsort Modturn module is designed to handle any kind of package, from small packages like polybags to medium sizes traditional packages. The Modsort Modturn module can be installed to rotate products on the fly or just to convey products.



Max.
22,7 Kg

MODSORT MODTURN TRANSFER MODULE SIZES

ITEM DESCRIPTION COMPLETE UNIT	Size	LENGTH	INTERNAL WIDTH "A"	EXTERNAL WIDTH "B"	TURNING ZONE LENGTH "E"	HEIGHT FRAME	UNIT WEIGHT
							Kg (lbs.)
mm (inch)							
MS-TRN-AI2-L36W32-28	5	914 (36)	711 (28)	805 (32)	338 x 650 (13.3 x 25.6)	202 (8)	113 (249)
MS-TRN-AI2-L42W32-28	7	1066 (42)	711 (28)	805 (32)	338 x 760 (13.3 x 29.9)	202 (8)	126 (277)
MS-TRN-AI2-L42W38-34	8	1066 (42)	864 (34)	958 (38)	425 x 760 (16.6 x 29.9)	202 (8)	139 (306)

Networked Control Card Ai2

Turning Zone: The turning effective area (combined action of both fabric belts for effective product's turning).

WHAT YOU NEED TO KNOW

WHAT IT DOES

- ✓ Receives product
- ✓ Passes product straight through
- ✓ Combined action of both PVC Divert Belts rotate products
- ✓ Can be used also to turn products usually:
 - 90 degrees turn
 - 180 degrees turn

HOW IT WORKS

System Plast® 2253RT Belt (blue) is used to receive and pass product through or when the PVC belts are activated they rotate packages. Product Rotation/Turning is achieved by powering 2253RT and both PVC turning belts MDR's. All three belts are driven by Industry standard MDR Technology, with a Regal Rexnord proprietary design lag coating.

BENEFITS

- ✓ Specifically designed for rotating products while transporting
- ✓ Flexible
 - Modular design can be easily integrated into existing conveyor systems and units can be re-arranged in case of changing layouts
 - Ability to convey a wide array of products
 - Run smaller packages and polybags without the "gaps" that are associated with pop-up transfer modules
 - High resolution package control
- ✓ Utilizes unique System Plast 2253 Roller Top belt technology for optimum precision
- ✓ Safe
 - No pushers, so no risk of people getting injured or product getting damaged
 - Low voltage (24VDC, no conduit required)
 - Low noise (< 70 dB)
- ✓ Low operating cost
 - Easy maintenance through minimum spare parts requirements
 - Energy savings as high as 50%- 60% compared to traditional conveyors

APPLICATION CONSIDERATION

Max Theoretical Throughput: up to 10.000 pph, variable according to the parcel size

Capacity Live Load - WEIGHT (Kg): Min. 0.1 – Max. 22,7

Noise @ max speed: < 70 dB

Control card - Networked ERSC:

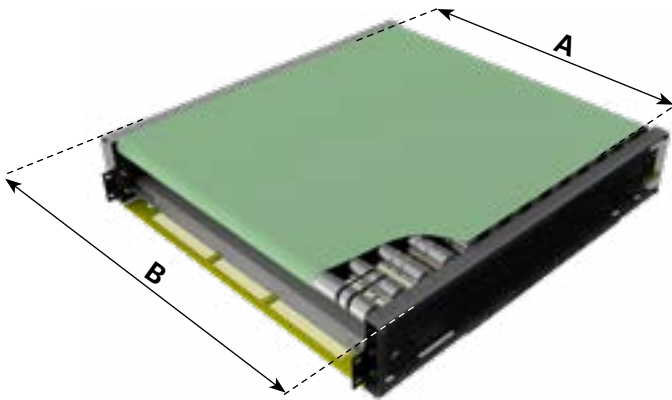
- Discrete program capability
- Interfaces to PLC via Ethernet/IP™*
- Control two MDR's per card
- Change Motor parameters on the fly

Control card position: Right side, referring to RT drive roller (travel direction)



* EtherNet/IP is believed to be the trademark and/or trade names of ODVA, Inc. and is not owned or controlled by Regal Rexnord Corporation.

INTERMEDIATE VERSION

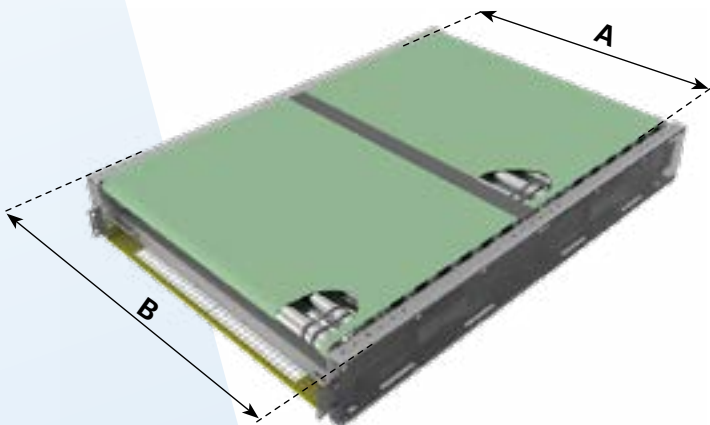


INTERMEDIATE MODULE (Single Belt)

The Intermediate module (single belt) is an all 24-Volt motorized belt conveyor actuated by motorized driven roller (MDR). It integrates specifically with Modsort Dual Divert module. The module is designed for interconnecting 2 Modsort units, with the possibility of managing the correct gap between the parcels for an effective sorting.



MODSORT INTERMEDIATE (Single Belt) TRANSFER MODULE SIZES						
ITEM DESCRIPTION COMPLETE UNIT	Size	LENGTH	INTERNAL WIDTH "A"	EXTERNAL WIDTH "B"	HEIGHT FRAME	UNIT WEIGHT
MS-INT-1ZB-L28W19-16	1, 3	711 (28)	406 (16)	500 (19.7)	202 (8)	60 (132.28)
MS-INT-1ZB-L28W26-22	2, 4, 6	711 (28)	559 (22)	653 (25.7)	202 (8)	75 (165.35)
MS-INT-1ZB-L28W32-28	5, 7	711 (28)	711 (28)	805 (31.7)	202 (8)	95 (209.44)
MS-INT-1ZB-L28W38-34	8	711 (28)	864 (34)	958 (37.7)	202 (8)	115 (253.53)
MS-INT-1ZB-L28W40-37	9	711 (28)	922 (36)	1029 (40.5)	202 (8)	124 (273.37)



INTERMEDIATE MODULE (Double Belt)

The Intermediate module (double belt) is an all 24-Volt motorized belt conveyor actuated by motorized driven roller (MDR). It integrates specifically with Modsort Dual Divert module. The module is designed for interconnecting two Modsort units, with the possibility of managing the correct gap between the parcels for an effective sorting.



MODSORT INTERMEDIATE (Double Belt) TRANSFER MODULE SIZES						
ITEM DESCRIPTION COMPLETE UNIT	Size	LENGTH	INTERNAL WIDTH "A"	EXTERNAL WIDTH "B"	HEIGHT FRAME	UNIT WEIGHT
MS-INT-2ZB-L56W19-16	1, 3	1422 (56)	406 (16)	500 (19.7)	202 (8)	120 (264.55)
MS-INT-2ZB-L56W26-22	2, 4, 6	1422 (56)	559 (22)	653 (25.7)	202 (8)	155 (341.72)
MS-INT-2ZB-L56W32-28	5, 7	1422 (56)	711 (28)	805 (31.7)	202 (8)	190 (418.88)
MS-INT-2ZB-L56W38-34	8	1422 (56)	864 (34)	958 (37.7)	202 (8)	230 (507.06)
MS-INT-2ZB-L56W40-37	9	1422 (56)	922 (36)	1029 (40.5)	202 (8)	240 (529.11)

WHAT YOU NEED TO KNOW

WHAT IT DOES

- ✓ Receives product
- ✓ Passes product straight through
- ✓ Provide a slowdown or acceleration of the product
- ✓ Maintain properly product gapping

HOW IT WORKS

When activated, one or two independent belt conveyor made in polyurethane, slowdown the product to provide the correct distance for an effective sorting.

BENEFITS

- ✓ Flexible
 - Modular design can be easily integrated into existing conveyor systems and units can be re-arranged in case of changing layouts
 - Specifically designed for providing the correct distance between the parcels for an effective sorting
 - Ability to convey a wide array of products
 - High resolution package control
- ✓ Safe
 - Low voltage (24VDC, no conduit required)
 - Low noise (< 70 dB)
- ✓ Low operating cost
 - Easy maintenance through minimum spare parts requirements
 - Energy savings as high as 50%- 60% compared to traditional conveyors

APPLICATION CONSIDERATION

Capacity Live Load - WEIGHT (Kg): Min. 0.1 – Max. 25

Noise @ max speed: 68 dB

Control card - Networked ERSC:

- Discrete program capability
- Interfaces to PLC via Ethernet/IP™*
- Control two MDR's per card
- Change Motor parameters on the fly



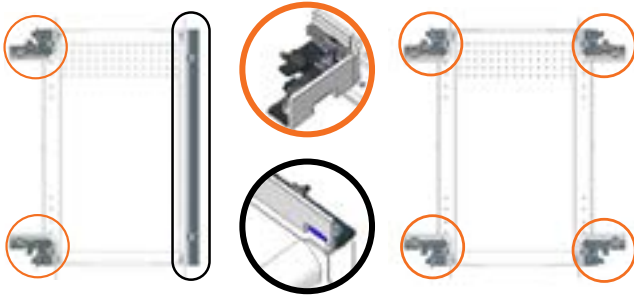
* EtherNet/IP is believed to be the trademark and/or trade names of ODVA, Inc. and is not owned or controlled by Regal Rexnord Corporation.

ACCESSORIES

SIDE GUIDE KITS (INCLUDING PHOTO-EYE)

SINGLE DIVERT

DOUBLE DIVERT

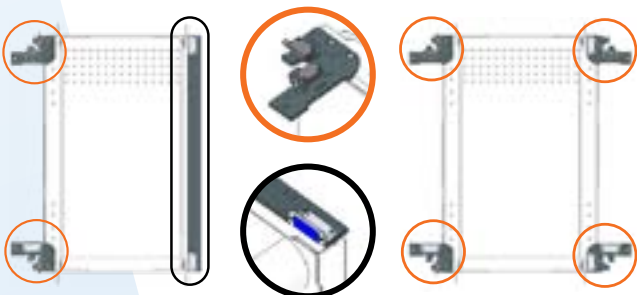


ITEM DESCRIPTION	ITEM DESCRIPTION	MODSORT® MODULE SIZE	TAKE-AWAY WIDTH	TRANSFER LENGTH
			mm (inch)	
MODSORT-MSGK-30-16TAW-S	MODSORT-MSGK-30-16TAW-D	1, 2	406 (16)	762 (30)
MODSORT-MSGK-30-22TAW-S	MODSORT-MSGK-30-22TAW-D	1, 2	559 (22)	762 (30)
MODSORT-MSGK-36-16TAW-S	MODSORT-MSGK-36-16TAW-D	3, 4, 5	406 (16)	914 (36)
MODSORT-MSGK-36-22TAW-S	MODSORT-MSGK-36-22TAW-D	3, 4, 5	559 (22)	914 (36)
MODSORT-MSGK-36-28TAW-S	MODSORT-MSGK-36-28TAW-D	3, 4, 5	711 (28)	914 (36)
MODSORT-MSGK-42-22TAW-S	MODSORT-MSGK-42-22TAW-D	6, 7, 8	559 (22)	1066 (42)
MODSORT-MSGK-42-28TAW-S	MODSORT-MSGK-42-28TAW-D	6, 7, 8	711 (28)	1066 (42)
MODSORT-MSGK-42-34TAW-S	MODSORT-MSGK-42-34TAW-D	6, 7, 8	864(34)	1066 (42)
MODSORT-MSGK-56-36TAW-S	MODSORT-MSGK-56-36TAW-D	9	1422 (56)	914 (36)
MODSORT-MSGK-56-42TAW-S	MODSORT-MSGK-56-42TAW-D	9	1422 (56)	1067 (42)
MODSORT-MSGK-56-48TAW-S	MODSORT-MSGK-56-48TAW-D	9	1422 (56)	1219 (48)

PHOTO EYE KITS

SINGLE DIVERT

DOUBLE DIVERT



ITEM DESCRIPTION	ITEM DESCRIPTION	MODSORT MODULE SIZE	TAKE-AWAY WIDTH	TRANSFER LENGTH
			mm (inch)	
MODSORT-MPES-30-16TAW-S	MODSORT-MPES-30-16TAW-D	1, 2	406 (16)	762 (30)
MODSORT-MPES-30-22TAW-S	MODSORT-MPES-30-22TAW-D	1, 2	559 (22)	762 (30)
MODSORT-MPES-36-16TAW-S	MODSORT-MPES-36-16TAW-D	3, 4, 5	406 (16)	914 (36)
MODSORT-MPES-36-22TAW-S	MODSORT-MPES-36-22TAW-D	3, 4, 5	559 (22)	914 (36)
MODSORT-MPES-36-28TAW-S	MODSORT-MPES-36-28TAW-D	3, 4, 5	711 (28)	914 (36)
MODSORT-MPES-42-22TAW-S	MODSORT-MPES-42-22TAW-D	6, 7, 8	559 (22)	1066 (42)
MODSORT-MPES-42-28TAW-S	MODSORT-MPES-42-28TAW-D	6, 7, 8	711 (28)	1066 (42)
MODSORT-MPES-42-34TAW-S	MODSORT-MPES-42-34TAW-D	6, 7, 8	864(34)	1066 (42)
MODSORT-MPES-56-36TAW-S	MODSORT-MPES-56-36TAW-D	9	1422 (56)	914 (36)
MODSORT-MPES-56-42TAW-S	MODSORT-MPES-56-42TAW-D	9	1422 (56)	1067 (42)
MODSORT-MPES-56-48TAW-S	MODSORT-MPES-56-48TAW-D	9	1422 (56)	1219 (48)

ACCESSORIES

ADJUSTABLE LEG KIT (2-SIDE, BOLTS AND LEVELLERS INCLUDED)

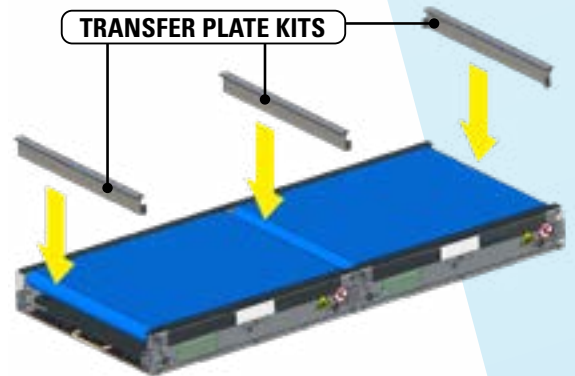
ITEM DESCRIPTION	MODSORT® MODULE SIZE	TOTAL HEIGHT RANGE*
		mm (inch)
MODSORT-LSK-500-670-16BFW	1, 3	500-670 (20-26)
MODSORT-LSK-670-865-16BFW	1, 3	670-865 (26-34)
MODSORT-LSK-865-1350-16BFW	1, 3	865-1350 (34-53)
MODSORT-LSK-500-670-22BFW	2, 4, 6	500-670 (20-26)
MODSORT-LSK-670-865-22BFW	2, 4, 6	670-865 (26-34)
MODSORT-LSK-865-1350-22BFW	2, 4, 6	865-1350 (34-53)
MODSORT-LSK-500-670-28BFW	5, 7	500-670 (20-26)
MODSORT-LSK-670-865-28BFW	5, 7	670-865 (26-34)
MODSORT-LSK-865-1350-28BFW	5, 7	865-1350 (34-53)
MODSORT-LSK-500-670-34BFW	8	500-670 (20-26)
MODSORT-LSK-670-865-34BFW	8	670-865 (26-34)
MODSORT-LSK-865-1350-34BFW	8	865-1350 (34-53)
MODSORT-LSK-500-670-37BFW	9	500-670 (20-26)
MODSORT-LSK-670-865-37BFW	9	670-865 (26-34)
MODSORT-LSK-865-1350-37BFW	9	865-1350 (34-53)



* Height inclusive of Leg Kit + Standard Modsort Unit

TRANSFER PLATE KIT (SUPPORT FRAME AND FIXING BOLTS INCLUDED)

ITEM DESCRIPTION	MODSORT MODULE SIZE	TOTAL LENGTH	TOTAL HEIGHT	TRANSFER PLATE WIDTH
		mm (inch)		
MS-EU-TRANSFER-PLATE-ASSEM-37W	1, 3	406 (16)		
MS-EU-TRANSFER-PLATE-ASSEM-34W	2, 4, 6	559 (22)		
MS-EU-TRANSFER-PLATE-ASSEM-28W	5, 7	711 (28)	86,5 (3.4)	40 (1.57)
MS-EU-TRANSFER-PLATE-ASSEM-22W	8	864 (34)		
MS-EU-TRANSFER-PLATE-ASSEM-16W	9	940 (37)		



POWER SUPPLY KIT

ITEM DESCRIPTION

MODSORT-MPS-400W



STAND ALONE KIT

ITEM DESCRIPTION

MODSORT-MPEK



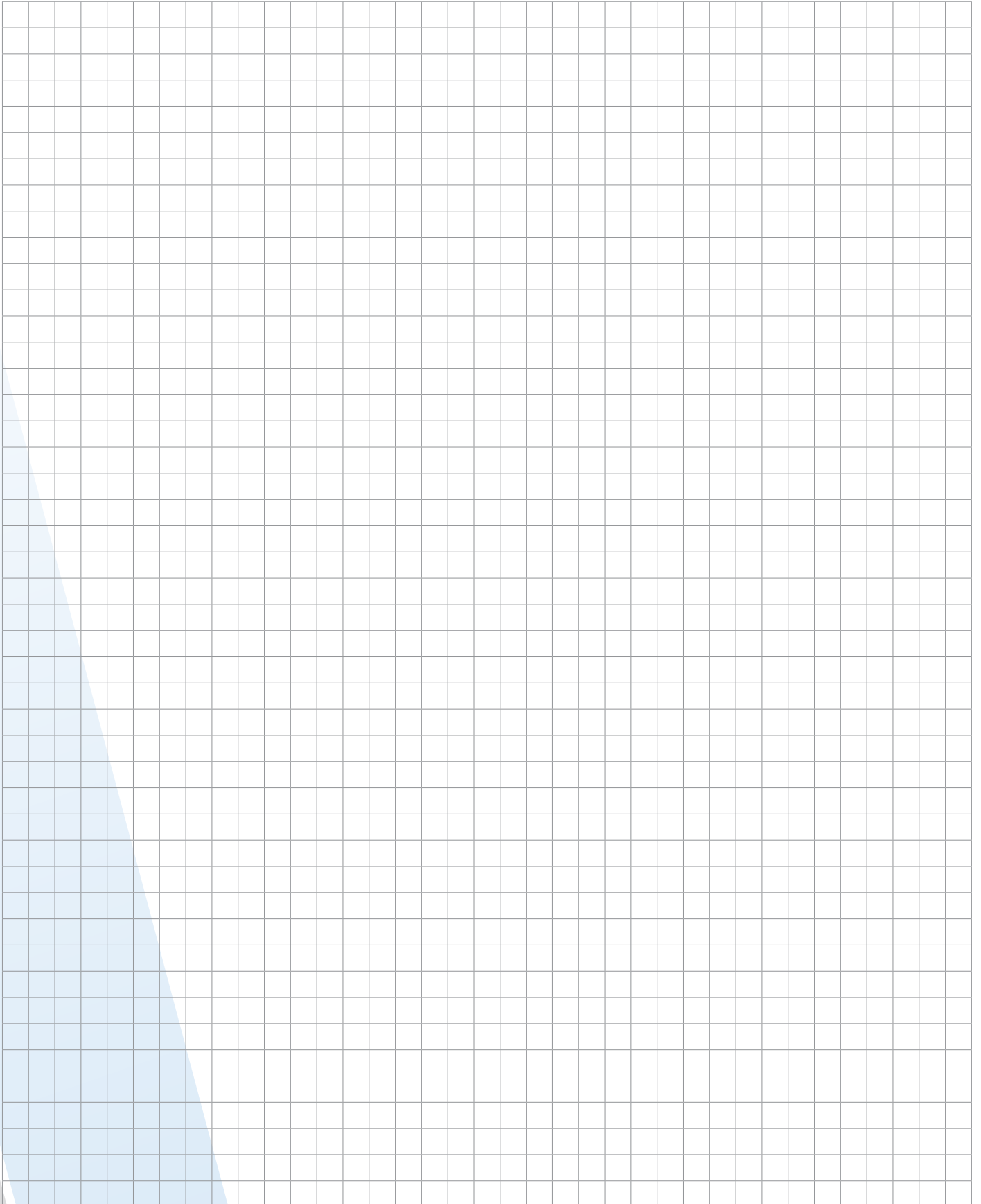
CONTROL CARD

ITEM DESCRIPTION

MS-CONTROLLER-AI-2



Notes:

A large, empty grid of small squares, intended for taking notes. The grid is composed of 30 columns and 40 rows of squares. The grid is positioned below the "Notes:" heading and occupies most of the page's content area.

Contact our Expert!

SystemPlast.Engineering@regalrexnord.com for US

SystemPlastTechSupport@regalrexnord.com for EU and ROW



Motion Control Solutions Regal Rexnord

Customer Service: 800-626-2120

Technical Service: 800-626-2093

modsort.sales@regalrexnord.com

regalrexnord.com

The proper selection and application of products and components, including assuring that the product is safe for its intended use, are the responsibility of the customer. To view our Application Considerations, please visit <https://www.regalrexnord.com/Application-Considerations>.

To view our Standard Terms and Conditions of Sale, please visit <https://www.regalrexnord.com/Terms-and-Conditions-of-Sale> (which may redirect to other website locations based on product family).

"Regal Rexnord" is not indicative of legal entity. Refer to product purchase documentation for the applicable legal entity.

Regal Rexnord, Modsort and System Plast are trademarks of Regal Rexnord Corporation or one of its affiliated companies.

© 2021, 2022 Regal Rexnord Corporation, All Rights Reserved. MCB22068E • Form# 10409E

The Regal Rexnord logo consists of a stylized icon of a gear or a similar mechanical part to the left of the text "RegalRexnord™". The text is in a bold, sans-serif font.