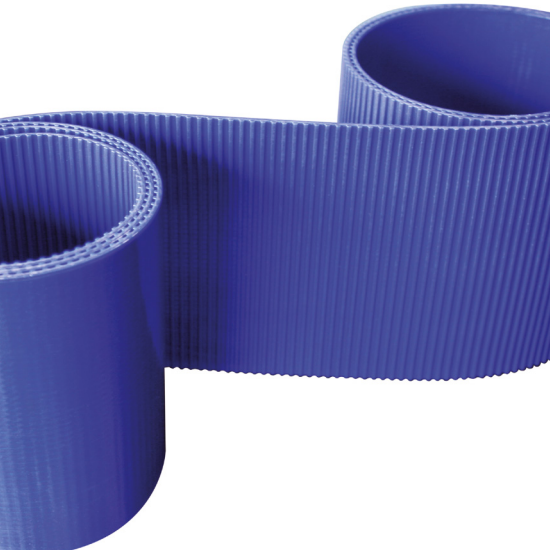


***FOOD
CONTACT
TIMING BELTS***

PRODUCT
BROCHURE

EN



MEGALINEAR FC

MEGALINEAR FC (FOOD CONTACT) IS A RANGE OF BELTS SPECIFICALLY INTRODUCED FOR THE FOOD PROCESSING INDUSTRY

MEGALINEAR FC is manufactured with Food Contact approved materials, according to FDA and European regulations EU 1935/2004, EU 10/2011, EU 174/2015.

Manufactured in T5/T10 pitch without gap between the teeth and available with a variety of backing profiles, for all kinds of conveying and processing applications. These advanced FDA synchronous belts have excellent resistance to chemicals and corrosion, certified for wet and dry food contact. Their use is particularly prevalent in a variety of applications in food processing and packaging.

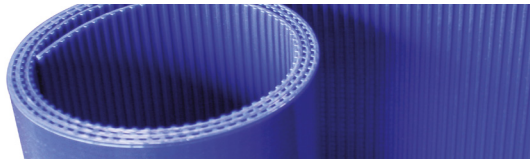
The homogenous belt design ensures a significantly greater service life, with a high level of hygienic integrity.

T5						
STANDARD WIDTH (mm)	25	32	50	75	100	150
Width tolerance (mm) +/-	0,25	0,25	0,5	0,5	0,75	0,75

T10						
STANDARD WIDTH (mm)	25	32	50	75	100	150
Width tolerance (mm) +/-	0,25	0,25	0,5	0,5	0,75	0,75

BENEFITS

- No risk of slippage, even in greasy and humid environment
- Zero risk of fraying and detaching of back profile
- Used even at the smallest bending diameter, with small drive pulleys
- Standard compound:
dark blue (RAL 5002) Polyurethane thermoplastic 85 ShA
- Standard cords: **S and Z torsion Kevlar**
- Working temperature -25°C/+80°C



MEGALINEAR FC

STANDARD SURFACE PROFILE OPTIONS

	T5			T10		
STANDARD SURFACES	TOTAL THICKNESS	PROFILE HEIGHT	ROLL LENGTH	TOTAL THICKNESS	PROFILE HEIGHT	ROLL LENGTH
SMOOTH (SMT)	2,8 +/- 0,3 mm	0 mm	50 m	4,8 +/- 0,3 mm	0 mm	50 m
LONGITUDINAL RIBBED (LTR)	4,0 +/- 0,3 mm	1,25 mm	50 m	6,05 +/- 0,3 mm	1,25 mm	50 m
TRANSVERSAL RIBBED (TVR)	4,0 +/- 0,3 mm	1,25 mm	50 m	6,05 +/- 0,3 mm	1,25 mm	50 m
NOPPEN OVAL (NPO)	5,2 +/- 0,3 mm	2,1 mm	50 m	7,7 +/- 0,3 mm	2,1 mm	50 m
ROOF (ROF)	n.a.	n.a.	n.a.	6,2 +/- 0,3 mm	1,7 mm	50 m
SPIKE SMALL (SPS)	4,1 +/- 0,3 mm	1,3 mm	50 m	6,1 +/- 0,3 mm	1,3 mm	50 m
SPIKE LARGE (SPL)	4,5 +/- 0,3 mm	1,7 mm	50 m	6,5 +/- 0,3 mm	1,7 mm	50 m
TRUNCATED PYRAMID 5 (TCP05)	4,0 +/- 0,3 mm	1,5 mm	50 m	6,3 +/- 0,3 mm	1,5 mm	50 m
TRUNCATED PYRAMID 10 (TCP10)	4,0 +/- 0,3 mm	1,5 mm	50 m	6,3 +/- 0,3 mm	1,5 mm	50 m
TRUNCATED CONE (TCC)	5,6 +/- 0,3 mm	2,6 mm	50 m	7,4 +/- 0,3 mm	2,6 mm	50 m
LAMELLA (LAM)	n.a.	n.a.	n.a.	15 +/- 0,3 mm	10 mm	50 m



SMT



LTR



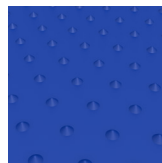
TVR



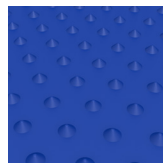
NPO



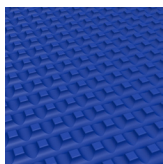
ROF



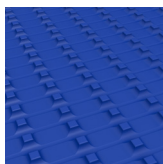
SPS



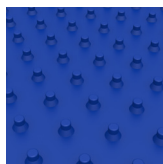
SPL



TCP05



TCP10



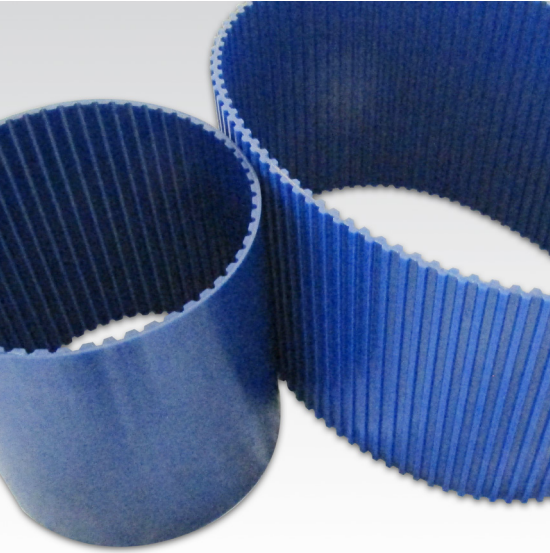
TCC



LAM

MEGALINEAR FC BELTS WITH CLEATS

Our smooth FC, no gap belt in T5 and T10 pitch can be additionally customized with cleats according to your specific need. CONTACT US FOR MORE INFORMATION.



MEGAPOWER FC

MEGAPOWER FC (FOOD CONTACT) IS DESIGNED FOR POWER TRANSMISSION AND CERTAIN SYNCHRONOUS CONVEYING APPLICATIONS WITHIN THE FOOD PROCESSING AND PACKAGING INDUSTRY WHERE THE POLYURETHANE CHEMISTRY IS BENEFICIAL FOR OILY ENVIRONMENTS AND WHERE RIGOROUS WASH DOWN PROCEDURES ARE COMMON.

Featuring stainless steel cords and a food contact compliant blue polyurethane, Megapower FC is ideal for both wet and dry applications due to good chemical and corrosion resistance in humid and wet environments. Megapower FC handles your high acceleration, multi stop/start synchronous food product handling drives with ease.

Megapower FC belts are manufactured with food contact approved materials and certified according to European regulations EU 1935/2004, EU 10/2011 and EU 174/2015

BENEFITS

- Resistance to most cleaning chemicals and humid, wet environments
- High acceleration, synchronizing and multi stop/start
- Designed for wash-down conditions
- Standard compound: **Thermoset PU 81 ShA dark blue RAL 5002**
- Cords: **Z Twisted stainless Steel AISI 304**
- Back profile: on request with additional mould costs
- Thermal working range tolerance (°C): +/- 5
- Working temperature -25°C/+80°C



MEGAPOWER FC

STANDARD SURFACE PROFILE OPTIONS

	L				H				
STD. BELT WIDTH (mm) (inch)	12,7 (050")	19,1 (075")	25,4 (100")	19,1 (075")	25,4 (100")	38,1 (150")	50,8 (200")	76,2 (300")	
PULLEY WIDTH B2* (mm)	19	25,4	29,7	25,4	29,7	46	59	85	
BELT WEIGHT (gr/cm)	0,437	0,661	0,878	0,745	1,059	1,594	2,121	3,194	
Standard belt width tolerance: +/- 0,80 mm									
Standard sleeve width tolerance: +/- 10 mm									
Standard thickness tolerance: +/- 0,30 mm									

	AT5							AT10							
STD. BELT WIDTH (mm)	6	8	10	12	16	20	25	10	12	16	20	25	32	50	75
PULLEY WIDTH B2* (mm)	12	13	15	17	21	25	30	15	17	21	25	30	37	56	80
BELT WEIGHT (gr/cm)	0,185	0,253	0,316	0,378	0,508	0,640	0,800	0,578	0,707	0,952	1,184	1,469	1,905	3,005	4,344
Standard belt width tolerance: +/- 0,50 mm							Standard belt width tolerance: +/- 0,50 mm								
Standard sleeve width tolerance: +/- 10 mm							Standard sleeve width tolerance: +/- 10 mm								
Standard thickness tolerance: +/- 0,15 mm							Standard thickness tolerance: +/- 0,30 mm								

	T5 - T5 DD							T10 - T10 DD							
STD. BELT WIDTH (mm)	6	8	10	12	16	20	25	10	12	16	20	25	32	50	75
PULLEY WIDTH B2* (mm)	12	13	15	17	21	25	30	15	17	21	25	30	37	56	80
BELT WEIGHT (gr/cm)	0,116	0,152	0,194	0,237	0,249	0,390	0,497	0,494	0,504	0,683	0,861	1,082	1,386	2,174	3,276
Standard belt width tolerance: +/- 0,50 mm							Standard belt width tolerance: +/- 0,50 mm								
Standard sleeve width tolerance: +/- 10 mm							Standard sleeve width tolerance: +/- 10 mm								
Standard thickness tolerance: +/- 0,15 mm							Standard thickness tolerance: +/- 0,30 mm								

Discover Your Local Contacts

The local partner of choice
for sustainable power transmission belting solutions
around the globe.

General contact information:

Megadyne

Via Trieste, 16
Via S. Lucia 114 - 10075 Mathi (Torino)
Italy



Scan the QR code
and find your local
contact

